

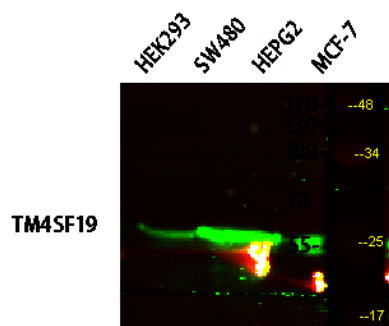


# TM4SF19 Polyclonal Antibody

<b>Catalog No</b>	YP-Ab-10928
<b>Isotype</b>	IgG
<b>Reactivity</b>	Human; Mouse; Rat
<b>Applications</b>	WB; ELISA
<b>Gene Name</b>	TM4SF19 OCTM4
<b>Protein Name</b>	TM4SF19
<b>Immunogen</b>	Synthesized peptide derived from human TM4SF19. AA range:140-160
<b>Specificity</b>	This antibody detects endogenous levels of human TM4SF19
<b>Formulation</b>	Liquid in PBS containing 50% glycerol, 0.5% BSA and 0.02% sodium azide.
<b>Source</b>	Polyclonal, Rabbit,IgG
<b>Purification</b>	The antibody was affinity-purified from mouse ascites by affinity-chromatography using specific immunogen.
<b>Dilution</b>	WB 1:500-2000, ELISA(peptide)1:5000-20000
<b>Concentration</b>	1 mg/ml
<b>Purity</b>	≥90%
<b>Storage Stability</b>	-20°C/1 year
<b>Synonyms</b>	Transmembrane 4 L6 family member 19 (Osteoclast maturation-associated gene 4 protein;Tetraspan membrane protein OCTM4)
<b>Observed Band</b>	24kD
<b>Cell Pathway</b>	Membrane ; Multi-pass membrane protein .
<b>Tissue Specificity</b>	Skin,
<b>Function</b>	similarity:Belongs to the L6 tetraspanin family.,
<b>Background</b>	similarity:Belongs to the L6 tetraspanin family.,
<b>matters needing attention</b>	Avoid repeated freezing and thawing!
<b>Usage suggestions</b>	This product can be used in immunological reaction related experiments. For more information, please consult technical personnel.



## Products Images



Western blot analysis of various lysates, primary antibody was diluted at 1:1000, 4° over night, secondary antibody(cat: RS23920)was diluted at 1:10000, 37° 1hour.