

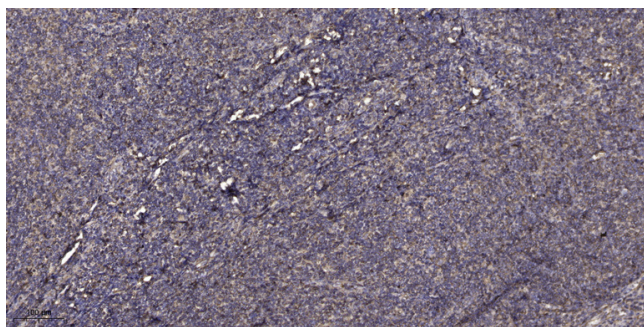


# Beta-defensin 1 Polyclona Antibody

<b>Catalog No</b>	YP-Ab-10920
<b>Isotype</b>	IgG
<b>Reactivity</b>	Human;Rat;Mouse;
<b>Applications</b>	IHC; ELISA
<b>Gene Name</b>	DEFB1 BD1 HBD1
<b>Protein Name</b>	Beta-defensin 1
<b>Immunogen</b>	Synthesized peptide derived from human Beta-defensin 1 AA range: 1-50
<b>Specificity</b>	This antibody detects endogenous levels of human Beta-defensin 1
<b>Formulation</b>	Liquid in PBS containing 50% glycerol, 0.5% BSA and 0.02% sodium azide.
<b>Source</b>	Polyclonal, Rabbit,IgG
<b>Purification</b>	The antibody was affinity-purified from mouse ascites by affinity-chromatography using specific immunogen.
<b>Dilution</b>	IHC-p 1:50-200, ELISA(peptide)1:5000-20000
<b>Concentration</b>	1 mg/ml
<b>Purity</b>	≥90%
<b>Storage Stability</b>	-20°C/1 year
<b>Synonyms</b>	Beta-defensin 1 (BD-1;hBD-1;Defensin, beta 1)
<b>Observed Band</b>	
<b>Cell Pathway</b>	Secreted . Membrane . Associates with tumor cell membrane-derived microvesicles (PubMed:23938203). .
<b>Tissue Specificity</b>	Blood plasma. Sperm. Highly expressed in the lower head and midpiece of sperm. Significantly reduced levels found in the sperms of asthenozoospermia and leukocytospermia patients (at protein level).
<b>Function</b>	function:Has bactericidal activity.,mass spectrometry: PubMed:7628632,similarity:Belongs to the beta-defensin family.,tissue specificity:Plasma.,
<b>Background</b>	Defensins form a family of microbicidal and cytotoxic peptides made by neutrophils. Members of the defensin family are highly similar in protein sequence. This gene encodes defensin, beta 1, an antimicrobial peptide implicated in the resistance of epithelial surfaces to microbial colonization. This gene maps in close proximity to defensin family member, defensin, alpha 1 and has been implicated in the pathogenesis of cystic fibrosis. [provided by RefSeq, Jul 2008],
<b>matters needing attention</b>	Avoid repeated freezing and thawing!

**Usage suggestions**

This product can be used in immunological reaction related experiments. For more information, please consult technical personnel.

**Products Images**

Immunohistochemical analysis of paraffin-embedded human tonsil. 1, Antibody was diluted at 1:200(4° overnight). 2, Tris-EDTA,pH9.0 was used for antigen retrieval. 3,Secondary antibody was diluted at 1:200(room temperature, 30min).