



PDE6G Polyclona Antibody

Catalog No	YP-Ab-10917
Isotype	IgG
Reactivity	Human; Mouse
Applications	IHC; ELISA
Gene Name	PDE6G PDEG
Protein Name	PDE6G
Immunogen	Synthesized peptide derived from human PDE6G AA range: 10-90
Specificity	This antibody detects endogenous levels of human PDE6G
Formulation	Liquid in PBS containing 50% glycerol, 0.5% BSA and 0.02% sodium azide.
Source	Polyclonal, Rabbit,IgG
Purification	The antibody was affinity-purified from mouse ascites by affinity-chromatography using specific immunogen.
Dilution	IHC-p 1:50-200, ELISA(peptide)1:5000-20000
Concentration	1 mg/ml
Purity	≥90%
Storage Stability	-20°C/1 year
Synonyms	Retinal rod rhodopsin-sensitive cGMP 3',5'-cyclic phosphodiesterase subunit gamma (GMP-PDE gamma;EC 3.1.4.35)
Observed Band	
Cell Pathway	plasma membrane,photoreceptor disc membrane,
Tissue Specificity	Human retina,Retina,
Function	catalytic activity:Guanosine 3',5'-cyclic phosphate + H(2)O = guanosine 5'-phosphate.,function:Participates in processes of transmission and amplification of the visual signal. cGMP-PDEs are the effector molecules in G-protein-mediated phototransduction in vertebrate rods and cones.,online information:Retina International's Scientific Newsletter,similarity:Belongs to the rod/cone cGMP-PDE gamma subunit family.,subunit:Oligomer composed of two catalytic chains (alpha and beta), an inhibitory chain (gamma) and the delta chain.,
Background	This gene encodes the gamma subunit of cyclic GMP-phosphodiesterase, which is composed of alpha- and beta- catalytic subunits and two identical, inhibitory gamma subunits. This gene is expressed in rod photoreceptors and functions in the phototransduction signaling cascade. It is also expressed in a variety of other tissues, and has been shown to regulate the c-Src protein kinase and G-protein-coupled receptor kinase 2. Alternative splicing results in multiple transcript variants. [provided by RefSeq, Feb 2009],

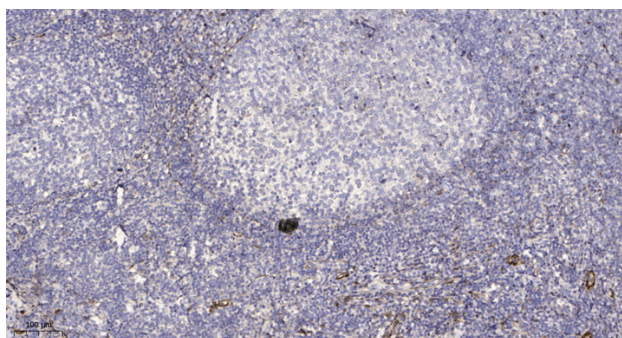
**matters needing attention**

Avoid repeated freezing and thawing!

Usage suggestions

This product can be used in immunological reaction related experiments. For more information, please consult technical personnel.

Products Images



Immunohistochemical analysis of paraffin-embedded human tonsil. 1, Antibody was diluted at 1:200(4° overnight). 2, Tris-EDTA,pH9.0 was used for antigen retrieval. 3,Secondary antibody was diluted at 1:200(room temperature, 30min).