

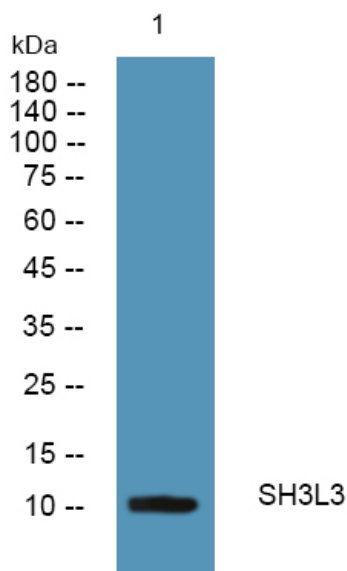


SH3BGRL3 Polyclonal Antibody

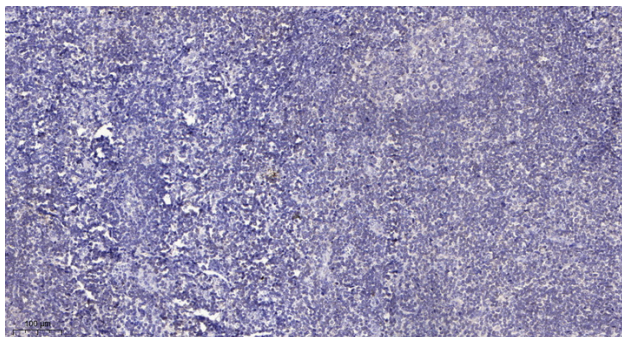
Catalog No	YP-Ab-10910
Isotype	IgG
Reactivity	Human; Mouse; Rat
Applications	WB;IHC;IF;ELISA
Gene Name	SH3BGRL3 P1725
Protein Name	SH3BGRL3
Immunogen	Synthesized peptide derived from human SH3BGRL3 AA range: 34-84
Specificity	This antibody detects endogenous levels of human SH3BGRL3
Formulation	Liquid in PBS containing 50% glycerol, 0.5% BSA and 0.02% sodium azide.
Source	Polyclonal, Rabbit,IgG
Purification	The antibody was affinity-purified from mouse ascites by affinity-chromatography using specific immunogen.
Dilution	Western Blot: 1/500 - 1/2000. Immunohistochemistry: 1/100 - 1/300. Immunofluorescence: 1/200 - 1/1000. ELISA: 1/5000. Not yet tested in other applications.
Concentration	1 mg/ml
Purity	≥90%
Storage Stability	-20°C/1 year
Synonyms	SH3 domain-binding glutamic acid-rich-like protein 3 (SH3 domain-binding protein 1;SH3BP-1)
Observed Band	
Cell Pathway	Cytoplasm. Nucleus.
Tissue Specificity	Ubiquitous.
Function	function:Could act as a modulator of glutaredoxin biological activity.,similarity:Belongs to the SH3BGR family.,similarity:Contains 1 glutaredoxin domain.,tissue specificity:Ubiquitous.,
Background	function:Could act as a modulator of glutaredoxin biological activity.,similarity:Belongs to the SH3BGR family.,similarity:Contains 1 glutaredoxin domain.,tissue specificity:Ubiquitous.,
matters needing attention	Avoid repeated freezing and thawing!
Usage suggestions	This product can be used in immunological reaction related experiments. For more information, please consult technical personnel.



Products Images



Western blot analysis of lysates from HCT116 cells, primary antibody was diluted at 1:1000, 4° over night



Immunohistochemical analysis of paraffin-embedded human tonsil. 1, Antibody was diluted at 1:200(4° overnight). 2, Tris-EDTA, pH9.0 was used for antigen retrieval. 3, Secondary antibody was diluted at 1:200(room temperature, 30min).