



APOC1 Polyclona Antibody

| | |
|---------------------------|---|
| Catalog No | YP-Ab-10900 |
| Isotype | IgG |
| Reactivity | Human;Rat;Mouse; |
| Applications | IHC; ELISA |
| Gene Name | APOC1 APOC1B |
| Protein Name | APOC1 |
| Immunogen | Synthesized peptide derived from human APOC1 AA range: 1-50 |
| Specificity | This antibody detects endogenous levels of human APOC1 |
| Formulation | Liquid in PBS containing 50% glycerol, 0.5% BSA and 0.02% sodium azide. |
| Source | Polyclonal, Rabbit,IgG |
| Purification | The antibody was affinity-purified from mouse ascites by affinity-chromatography using specific immunogen. |
| Dilution | IHC-p 1:50-200, ELISA(peptide)1:5000-20000 |
| Concentration | 1 mg/ml |
| Purity | ≥90% |
| Storage Stability | -20°C/1 year |
| Synonyms | Apolipoprotein C-I (Apo-CIB;ApoC-IB;Apolipoprotein C1) [Cleaved into: Truncated apolipoprotein C-I (Apo-CIB';ApoC-IB')] |
| Observed Band | |
| Cell Pathway | Secreted . |
| Tissue Specificity | Synthesized mainly in liver and to a minor degree in intestine. Also found in the lung and spleen. |
| Function | function:Appears to modulate the interaction of APOE with beta-migrating VLDL and inhibit binding of beta-VLDL to the LDL receptor-related protein.,miscellaneous:Apo-CI makes up about 10% of the protein of the VLDL (very low density lipoprotein) and 2% of that of HDL (high density lipoprotein).,online information:Apolipoprotein C1 entry,similarity:Belongs to the apolipoprotein C1 family.,tissue specificity:Synthesized mainly in liver and to a minor degree in intestine. Secreted in plasma., |
| Background | This gene encodes a member of the apolipoprotein C1 family. This gene is expressed primarily in the liver, and it is activated when monocytes differentiate into macrophages. The encoded protein plays a central role in high density lipoprotein (HDL) and very low density lipoprotein (VLDL) metabolism. This protein has also been shown to inhibit cholesteryl ester transfer protein in plasma. A pseudogene of this gene is located 4 kb downstream in the same orientation, on the same chromosome. This gene is mapped to chromosome 19, where it resides |



within a apolipoprotein gene cluster. Alternative splicing and the use of alternative promoters results in multiple transcript variants. [provided by RefSeq, Sep 2016],

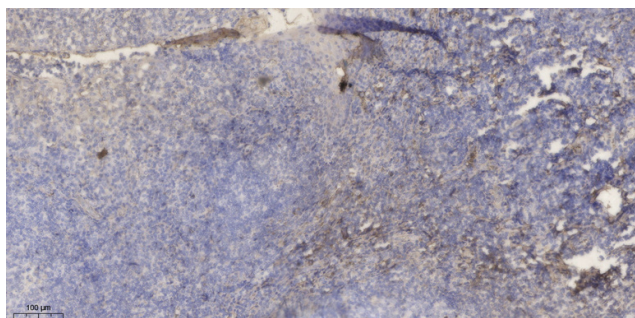
matters needing attention

Avoid repeated freezing and thawing!

Usage suggestions

This product can be used in immunological reaction related experiments. For more information, please consult technical personnel.

Products Images



Immunohistochemical analysis of paraffin-embedded human tonsil. 1, Antibody was diluted at 1:200(4° overnight). 2, Tris-EDTA,pH9.0 was used for antigen retrieval. 3,Secondary antibody was diluted at 1:200(room temperature, 30min).