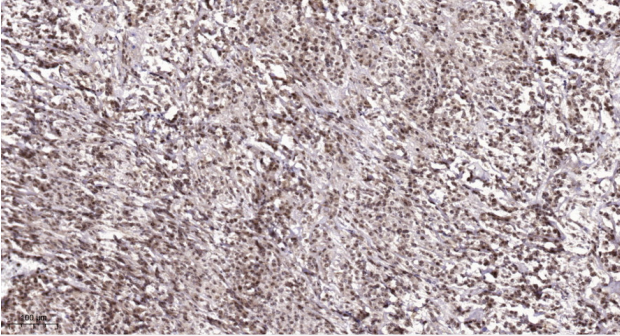




PKIG Polyclona Antibody

Catalog No	YP-Ab-10893
Isotype	IgG
Reactivity	Human;Rat;Mouse;
Applications	IHC; ELISA
Gene Name	PKIG
Protein Name	PKIG
Immunogen	Synthesized peptide derived from human PKIG AA range: 1-80
Specificity	This antibody detects endogenous levels of human PKIG
Formulation	Liquid in PBS containing 50% glycerol, 0.5% BSA and 0.02% sodium azide.
Source	Polyclonal, Rabbit,IgG
Purification	The antibody was affinity-purified from mouse ascites by affinity-chromatography using specific immunogen.
Dilution	IHC-p 1:50-200, ELISA(peptide)1:5000-20000
Concentration	1 mg/ml
Purity	≥90%
Storage Stability	-20°C/1 year
Synonyms	cAMP-dependent protein kinase inhibitor gamma (PKI-gamma)
Observed Band	
Cell Pathway	nucleus,cytoplasm,
Tissue Specificity	Ubiquitous.
Function	function:Extremely potent competitive inhibitor of cAMP-dependent protein kinase activity, this protein interacts with the catalytic subunit of the enzyme after the cAMP-induced dissociation of its regulatory chains.,similarity:Belongs to the PKI family.,tissue specificity:Ubiquitous.,
Background	This gene encodes a member of the protein kinase inhibitor family. Studies of a similar protein in mice suggest that this protein acts as a potent competitive cAMP-dependent protein kinase inhibitor, and is a predominant form of inhibitor in various tissues. The encoded protein may be involved in osteogenesis. Alternative splicing results in multiple transcript variants. [provided by RefSeq, Jul 2013],
matters needing attention	Avoid repeated freezing and thawing!
Usage suggestions	This product can be used in immunological reaction related experiments. For more information, please consult technical personnel.

Products Images



Immunohistochemical analysis of paraffin-embedded human Colon cancer. 1, Antibody was diluted at 1:200(4° overnight). 2, Tris-EDTA,pH9.0 was used for antigen retrieval. 3,Secondary antibody was diluted at 1:200(room temperature, 45min).