



RPAB4 Polyclona Antibody

Catalog No	YP-Ab-10890
Isotype	IgG
Reactivity	Human; Mouse
Applications	IHC; ELISA
Gene Name	POLR2K
Protein Name	RPAB4
Immunogen	Synthesized peptide derived from human RPAB4 AA range: 1-50
Specificity	This antibody detects endogenous levels of human RPAB4
Formulation	Liquid in PBS containing 50% glycerol, 0.5% BSA and 0.02% sodium azide.
Source	Polyclonal, Rabbit,IgG
Purification	The antibody was affinity-purified from mouse ascites by affinity-chromatography using specific immunogen.
Dilution	IHC-p 1:50-200, ELISA(peptide)1:5000-20000
Concentration	1 mg/ml
Purity	≥90%
Storage Stability	-20°C/1 year
Synonyms	DNA-directed RNA polymerases I, II, and III subunit RPABC4 (RNA polymerases I, II, and III subunit ABC4;ABC10-alpha;DNA-directed RNA polymerase II subunit K;RNA polymerase II 7.0 kDa subunit;RPB7.0;RPB10alpha)
Observed Band	
Cell Pathway	Nucleus .
Tissue Specificity	Ovary,Placenta,
Function	function:DNA-dependent RNA polymerase catalyzes the transcription of DNA into RNA using the four ribonucleoside triphosphates as substrates. Common component of RNA polymerases I, II and III which synthesize ribosomal RNA precursors, mRNA precursors and many functional non-coding RNAs, and a small RNAs, such as 5S rRNA and tRNAs, respectively.,similarity:Belongs to the archaeal rpoP/eukaryotic RPC10 RNA polymerase subunit family.,subunit:Component of the RNA polymerase I (Pol I), RNA polymerase II (Pol II) and RNA polymerase III (Pol III) complexes consisting of at least 13, 12 and 17 subunits, respectively.,
Background	This gene encodes one of the smallest subunits of RNA polymerase II, the polymerase responsible for synthesizing messenger RNA in eukaryotes. This subunit is shared by the other two DNA-directed RNA polymerases. [provided by RefSeq, Jul 2008],

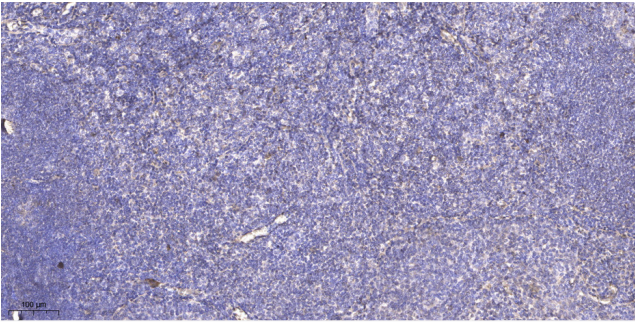
matters needing attention

Avoid repeated freezing and thawing!

Usage suggestions

This product can be used in immunological reaction related experiments. For more information, please consult technical personnel.

Products Images



Immunohistochemical analysis of paraffin-embedded human tonsil. 1, Antibody was diluted at 1:200(4° overnight). 2, Tris-EDTA,pH9.0 was used for antigen retrieval. 3,Secondary antibody was diluted at 1:200(room temperature, 45min).