



POLD4 Polyclona Antibody

Catalog No	YP-Ab-10889
Isotype	IgG
Reactivity	Human;Rat;Mouse;
Applications	WB;IHC;IF;ELISA
Gene Name	POLD4 POLDS
Protein Name	POLD4
Immunogen	Synthesized peptide derived from human POLD4 AA range: 43-93
Specificity	This antibody detects endogenous levels of human POLD4
Formulation	Liquid in PBS containing 50% glycerol, 0.5% BSA and 0.02% sodium azide.
Source	Polyclonal, Rabbit,IgG
Purification	The antibody was affinity-purified from mouse ascites by affinity-chromatography using specific immunogen.
Dilution	Western Blot: 1/500 - 1/2000. Immunohistochemistry: 1/100 - 1/300. Immunofluorescence: 1/200 - 1/1000. ELISA: 1/5000. Not yet tested in other applications.
Concentration	1 mg/ml
Purity	≥90%
Storage Stability	-20°C/1 year
Synonyms	DNA polymerase delta subunit 4 (DNA polymerase delta subunit p12)
Observed Band	
Cell Pathway	Nucleus . Partially recruited to DNA damage sites within 2 hours following UV irradiation, before degradation. .
Tissue Specificity	Brain,Cervix,Ovarian carcinoma,Pooled,
Function	function:Required for optimal DNA polymerase delta activity. May contribute to PCNA-dependent activity of DNA polymerase delta.,similarity:Belongs to the DNA polymerase delta subunit 4 family.,subunit:Heterotetramer composed of subunits of 125 kDa, 50 kDa, 66 kDa and 12 kDa. Interacts with WRNIP1. Interacts with POLD4, POLD2, POLD1 and PCNA.,
Background	This gene encodes the smallest subunit of DNA polymerase delta. DNA polymerase delta possesses both polymerase and 3' to 5' exonuclease activity and plays a critical role in DNA replication and repair. The encoded protein enhances the activity of DNA polymerase delta and plays a role in fork repair and stabilization through interactions with the DNA helicase Bloom syndrome protein. Alternatively spliced transcript variants encoding multiple isoforms have been observed for this gene. [provided by RefSeq, Mar 2012],



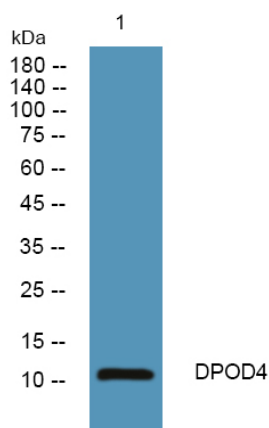
matters needing attention

Avoid repeated freezing and thawing!

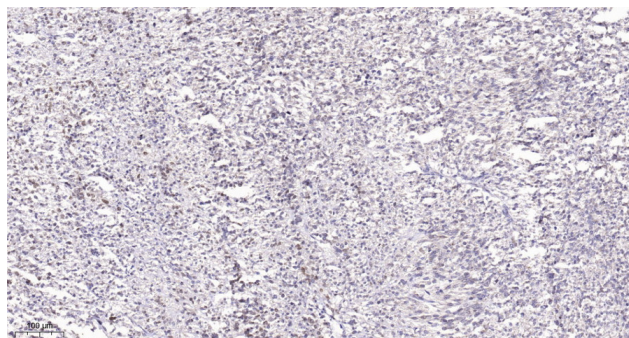
Usage suggestions

This product can be used in immunological reaction related experiments. For more information, please consult technical personnel.

Products Images



Western blot analysis of lysates from A431 cells, primary antibody was diluted at 1:1000, 4° over night



Immunohistochemical analysis of paraffin-embedded human Small intestinal stromal tumor. 1, Tris-EDTA, pH 9.0 was used for antigen retrieval. 2 Antibody was diluted at 1:200 (4° overnight). 3, Secondary antibody was diluted at 1:200 (room temperature, 45 min).