



GRASP Polyclonal Antibody

| | |
|---------------------------|---|
| Catalog No | YP-Ab-10861 |
| Isotype | IgG |
| Reactivity | Human; Mouse; Rat |
| Applications | IHC;IF;WB |
| Gene Name | GRASP |
| Protein Name | GRASP |
| Immunogen | Synthesized peptide derived from human GRASP |
| Specificity | This antibody detects endogenous levels of human GRASP |
| Formulation | Liquid in PBS containing 50% glycerol, 0.5% BSA and 0.02% sodium azide. |
| Source | Polyclonal, Rabbit,IgG |
| Purification | The antibody was affinity-purified from rabbit serum by affinity-chromatography using specific immunogen. |
| Dilution | IHC-p 1:50-200, WB 1:500-2000. IF 1:50-200 |
| Concentration | 1 mg/ml |
| Purity | ≥90% |
| Storage Stability | -20°C/1 year |
| Synonyms | General receptor for phosphoinositides 1-associated scaffold protein (GRP1-associated scaffold protein) |
| Observed Band | 38kD |
| Cell Pathway | Cytoplasm, perinuclear region . Cell membrane ; Peripheral membrane protein ; Cytoplasmic side . Cell junction, synapse, postsynaptic cell membrane . |
| Tissue Specificity | Ovary,Skin, |
| Function | function:Plays a role in intracellular trafficking and contributes to the macromolecular organization of group 1 metabotropic glutamate receptors (mGluRs) at synapses.,similarity:Contains 1 PDZ (DHR) domain.,subcellular location:Localized at postsynaptic membranes.,subunit:Heteromer. Composed of GRASP, PSCD2 and at least one GRM1. Also interacts with PSCD3, GRM2, GRM3 and GRM5., |
| Background | This gene encodes a protein that functions as a molecular scaffold, linking receptors, including group 1 metabotropic glutamate receptors, to neuronal proteins. The encoded protein contains conserved domains, including a leucine zipper sequence, PDZ domain and a C-terminal PDZ-binding motif. Alternately spliced transcript variants have been observed for this gene.[provided by RefSeq, Dec 2012], |



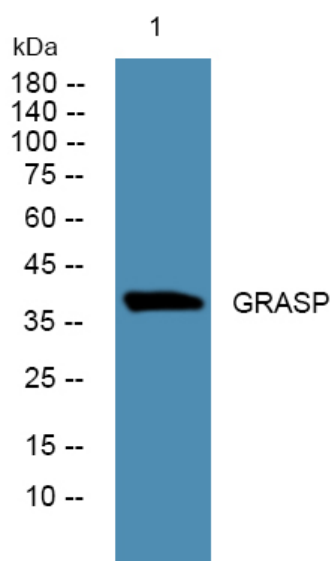
matters needing attention

Avoid repeated freezing and thawing!

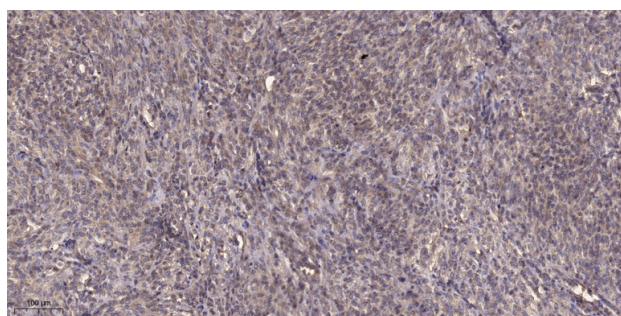
Usage suggestions

This product can be used in immunological reaction related experiments. For more information, please consult technical personnel.

Products Images



Western blot analysis of lysates from PC12 cells, primary antibody was diluted at 1:1000, 4° over night



Immunohistochemical analysis of paraffin-embedded human Colon cancer. 1, Antibody was diluted at 1:200(4° overnight). 2, Tris-EDTA, pH9.0 was used for antigen retrieval. 3, Secondary antibody was diluted at 1:200(room temperature, 45min).