

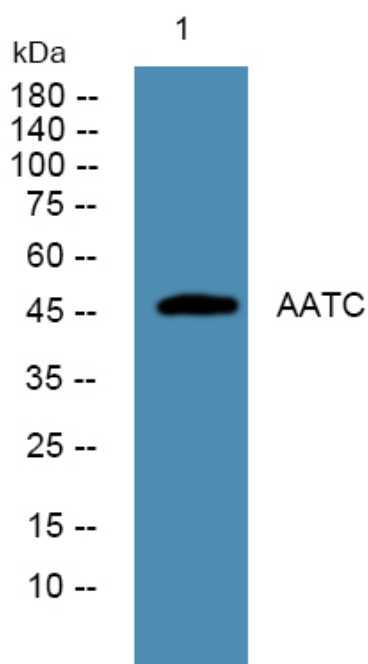


AATC Polyclonal Antibody

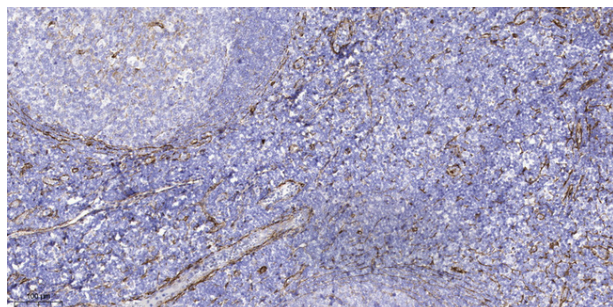
Catalog No	YP-Ab-10836
Isotype	IgG
Reactivity	Human; Mouse; Rat
Applications	IHC;IF;WB
Gene Name	GOT1
Protein Name	AATC
Immunogen	Synthesized peptide derived from human AATC
Specificity	This antibody detects endogenous levels of human AATC
Formulation	Liquid in PBS containing 50% glycerol, 0.5% BSA and 0.02% sodium azide.
Source	Polyclonal, Rabbit,IgG
Purification	The antibody was affinity-purified from rabbit serum by affinity-chromatography using specific immunogen.
Dilution	IHC-p 1:50-200, WB 1:500-2000. IF 1:50-200
Concentration	1 mg/ml
Purity	≥90%
Storage Stability	-20°C/1 year
Synonyms	Aspartate aminotransferase, cytoplasmic (EC 2.6.1.1;Glutamate oxaloacetate transaminase 1;Transaminase A)
Observed Band	42kD
Cell Pathway	Cytoplasm .
Tissue Specificity	Brain,Liver,Lung,
Function	catalytic activity:L-aspartate + 2-oxoglutarate = oxaloacetate + L-glutamate.,cofactor:Pyridoxal phosphate.,miscellaneous:In eukaryotes there are cytoplasmic, mitochondrial and chloroplastic isozymes.,similarity:Belongs to the class-I pyridoxal-phosphate-dependent aminotransferase family.,subunit:Homodimer.,
Background	Glutamic-oxaloacetic transaminase is a pyridoxal phosphate-dependent enzyme which exists in cytoplasmic and mitochondrial forms, GOT1 and GOT2, respectively. GOT plays a role in amino acid metabolism and the urea and tricarboxylic acid cycles. The two enzymes are homodimeric and show close homology. [provided by RefSeq, Jul 2008],
matters needing attention	Avoid repeated freezing and thawing!

**Usage suggestions**

This product can be used in immunological reaction related experiments. For more information, please consult technical personnel.

Products Images

Western blot analysis of lysates from A431 cells, primary antibody was diluted at 1:1000, 4° over night



Immunohistochemical analysis of paraffin-embedded human tonsil. 1, Tris-EDTA, pH 9.0 was used for antigen retrieval. 2 Antibody was diluted at 1:200 (4° overnight). 3, Secondary antibody was diluted at 1:200 (room temperature, 45 min).