



DIAP2 Polyclonal Antibody

Catalog No	YP-Ab-10831
Isotype	IgG
Reactivity	Human; Mouse
Applications	IHC;IF;WB
Gene Name	DIAPH2 DIA
Protein Name	DIAP2
Immunogen	Synthesized peptide derived from human DIAP2
Specificity	This antibody detects endogenous levels of human DIAP2
Formulation	Liquid in PBS containing 50% glycerol, 0.5% BSA and 0.02% sodium azide.
Source	Polyclonal, Rabbit,IgG
Purification	The antibody was affinity-purified from rabbit serum by affinity-chromatography using specific immunogen.
Dilution	IHC-p 1:50-200, WB 1:500-2000. IF 1:50-200
Concentration	1 mg/ml
Purity	≥90%
Storage Stability	-20°C/1 year
Synonyms	Protein diaphanous homolog 2 (Diaphanous-related formin-2;DRF2)
Observed Band	125kD
Cell Pathway	[Isoform 3]: Cytoplasm, cytosol. Early endosome. Isoform 3 is cytosolic but when coexpressed with RHOD, the 2 proteins colocalize to early endosomes.
Tissue Specificity	Expressed in testis, ovary, small intestine, prostate, lung, liver, kidney and leukocytes.
Function	developmental stage:Expressed from E16 in ovary and testis and during P6-P16 during differentiation of ovarian follicles.,disease:Defects in DIAPH2 are a cause of premature ovarian failure 2 (POF2) [MIM:300511]. Premature ovarian failure (POF) is a defect of ovarian development and is characterized by hypoeestrogenism, primary or secondary amenorrhea, with elevated levels of serum gonadotropins, or by early menopause. POF is defined as the cessation of ovarian function under the age of 40 years. The disorder has been attributed to various causes, including rearrangements of a large "critical region" in the long arm of the X chromosome.,domain:DRFs are regulated by intramolecular GBD-DAD binding where Rho-GTP activates the DRFs by disrupting the GBD-DAD interaction.,function:Could be involved in oogenesis. Involved in the regulation of endosome dynamics. Implicated in a novel signal transd
Background	The product of this gene belongs to the diaphanous subfamily of the formin homology family of proteins. This gene may play a role in the development and normal function of the ovaries. Defects in this gene have been linked to premature



ovarian failure 2. Alternatively spliced transcript variants encoding different isoforms have been identified. [provided by RefSeq, Jul 2008],

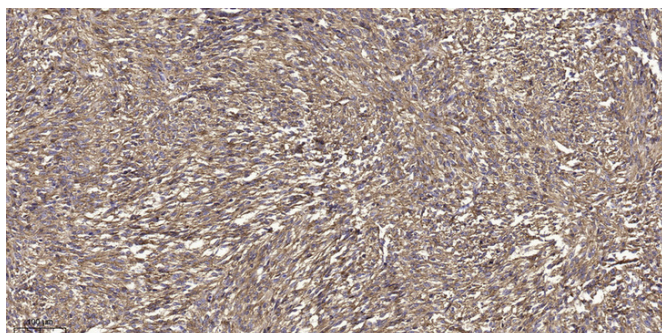
matters needing attention

Avoid repeated freezing and thawing!

Usage suggestions

This product can be used in immunological reaction related experiments. For more information, please consult technical personnel.

Products Images



Immunohistochemical analysis of paraffin-embedded human small intestinal carcinoma tissue. 1, primary Antibody was diluted at 1:200 (4° overnight). 2, Sodium citrate pH 6.0 was used for antigen retrieval (>98° C, 20min). 3, Secondary antibody was diluted at 1:200