



AVPR1A Polyclonal Antibody

Catalog No	YP-Ab-10778
Isotype	IgG
Reactivity	Human;Mouse
Applications	WB;ELISA
Gene Name	AVPR1A
Protein Name	AVPR1A
Immunogen	Synthesized peptide derived from human AVPR1A. at AA range: 11-60
Specificity	AVPR1A Polyclonal Antibody detects endogenous levels of AVPR1A
Formulation	Liquid in PBS containing 50% glycerol, 0.5% BSA and 0.02% sodium azide.
Source	Polyclonal, Rabbit,IgG
Purification	The antibody was affinity-purified from rabbit antiserum by affinity-chromatography using epitope-specific immunogen.
Dilution	WB 1:500-2000, ELISA 1:10000-20000
Concentration	1 mg/ml
Purity	≥90%
Storage Stability	-20°C/1 year
Synonyms	Vasopressin V1a receptor (V1aR) (AVPR V1a) (Antidiuretic hormone receptor 1a) (Vascular/hepatic-type arginine vasopressin receptor)
Observed Band	55kD
Cell Pathway	Cell membrane; Multi-pass membrane protein.
Tissue Specificity	Liver,Lung,
Function	function:Receptor for arginine vasopressin. The activity of this receptor is mediated by G proteins which activate a phosphatidyl-inositol-calcium second messenger system. Has been involved in social behaviors, including affiliation and attachment.,miscellaneous:Differences in regional receptor expression in the brain as well as differences in social behavior may result from a highly variable repetitive sequence in the 5' flanking region of AVPR1A. One such allelic variant has been linked to autism.,similarity:Belongs to the G-protein coupled receptor 1 family.,
Background	The protein encoded by this gene acts as receptor for arginine vasopressin. This receptor belongs to the subfamily of G-protein coupled receptors which includes AVPR1B, V2R and OXT receptors. Its activity is mediated by G proteins which stimulate a phosphatidylinositol-calcium second messenger system. The receptor mediates cell contraction and proliferation, platelet aggregation, release of coagulation factor and glycogenolysis. [provided by RefSeq, Jul 2008],

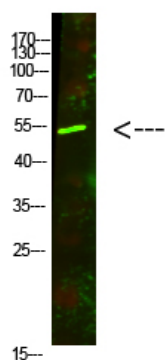
**matters needing attention**

Avoid repeated freezing and thawing!

Usage suggestions

This product can be used in immunological reaction related experiments. For more information, please consult technical personnel.

Products Images



Western Blot analysis of mouse-lung cells using primary antibody diluted at 1:500(4°C overnight).
Secondary antibody:Goat Anti-rabbit IgG IRDye 800(diluted at 1:5000, 25°C, 1 hour)