



FIG4 Polyclonal Antibody

Catalog No	YP-Ab-10761
Isotype	IgG
Reactivity	Human;Mouse
Applications	WB;ELISA
Gene Name	FIG4 KIAA0274 SAC3
Protein Name	FIG4
Immunogen	Synthesized peptide derived from human FIG4. at AA range: 341-390
Specificity	This antibody detects endogenous levels of FIG4
Formulation	Liquid in PBS containing 50% glycerol, 0.5% BSA and 0.02% sodium azide.
Source	Polyclonal, Rabbit,IgG
Purification	The antibody was affinity-purified from rabbit antiserum by affinity-chromatography using epitope-specific immunogen.
Dilution	WB 1:500-2000, ELISA 1:10000-20000
Concentration	1 mg/ml
Purity	≥90%
Storage Stability	-20°C/1 year
Synonyms	Polyphosphoinositide phosphatase (EC 3.1.3.-) (Phosphatidylinositol 3,5-bisphosphate 5-phosphatase) (SAC domain-containing protein 3)
Observed Band	110kD
Cell Pathway	Endosome membrane . Localization requires VAC14 and PIKFYVE. .
Tissue Specificity	
Function	phospholipid metabolic process, glycerophospholipid metabolic process, vacuole organization, behavior, locomotory behavior, cell death, death, organophosphate metabolic process, neuron differentiation, phosphoinositide metabolic process, pigmentation, glycerolipid metabolic process, neuron development,
Background	The protein encoded by this gene belongs to the SAC domain-containing protein gene family. The SAC domain, approximately 400 amino acids in length and consisting of seven conserved motifs, has been shown to possess phosphoinositide phosphatase activity. The yeast homolog, Sac1p, is involved in the regulation of various phosphoinositides, and affects diverse cellular functions such as actin cytoskeleton organization, Golgi function, and maintenance of vacuole morphology. Membrane-bound phosphoinositides function as signaling molecules and play a key role in vesicle trafficking in eukaryotic cells. Mutations in this gene have been associated with Charcot-Marie-Tooth disease, type 4J. [provided by RefSeq, Jul 2008],

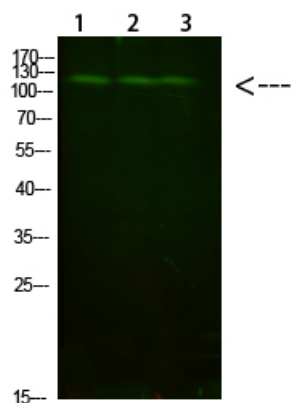
**matters needing attention**

Avoid repeated freezing and thawing!

Usage suggestions

This product can be used in immunological reaction related experiments. For more information, please consult technical personnel.

Products Images



Western Blot analysis of 1,mouse-liver 2,hela 3,mouse-brain cells using primary antibody diluted at 1:1000(4°C overnight). Secondary antibody:Goat Anti-rabbit IgG IRDye 800(diluted at 1:5000, 25°C, 1 hour)