

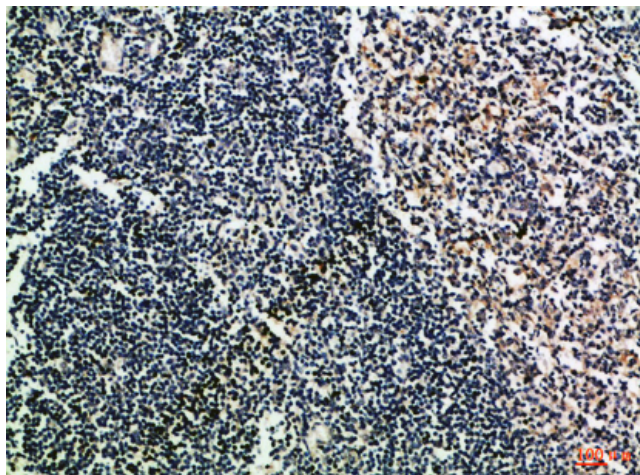


CD52 Polyclonal Antibody

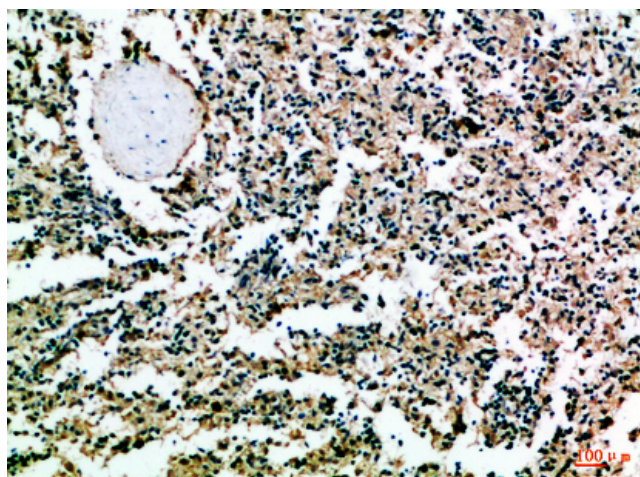
Catalog No	YP-Ab-10735
Isotype	IgG
Reactivity	Human;Rat;Mouse;
Applications	IHC;IF;ELISA
Gene Name	CD52 CDW52 HE5
Protein Name	CAMPATH-1 antigen (CDw52) (Cambridge pathology 1 antigen) (Epididymal secretory protein E5) (Human epididymis-specific protein 5) (He5) (CD antigen CD52)
Immunogen	Synthetic peptide from human protein at AA range: 20-50
Specificity	The antibody detects endogenous CD52
Formulation	Liquid in PBS containing 50% glycerol, 0.5% BSA and 0.02% sodium azide.
Source	Polyclonal, Rabbit,IgG
Purification	The antibody was affinity-purified from rabbit antiserum by affinity-chromatography using epitope-specific immunogen.
Dilution	IHC-p 1:50-200, ELISA 1:10000-20000. IF 1:50-200
Concentration	1 mg/ml
Purity	≥90%
Storage Stability	-20°C/1 year
Synonyms	CAMPATH-1 antigen (CDw52;Cambridge pathology 1 antigen;Epididymal secretory protein E5;Human epididymis-specific protein 5;He5;CD antigen CD52)
Observed Band	15-20kD
Cell Pathway	Cell membrane; Lipid-anchor, GPI-anchor.
Tissue Specificity	Epididymis,Lymph,Spleen,
Function	function:May play a role in carrying and orienting carbohydrate, as well as having a more specific role.,
Background	function:May play a role in carrying and orienting carbohydrate, as well as having a more specific role.,
matters needing attention	Avoid repeated freezing and thawing!
Usage suggestions	This product can be used in immunological reaction related experiments. For more information, please consult technical personnel.



Products Images



Immunohistochemical analysis of paraffin-embedded Human-tonsil, antibody was diluted at 1:100



Immunohistochemical analysis of paraffin-embedded Human-spleen, antibody was diluted at 1:100