

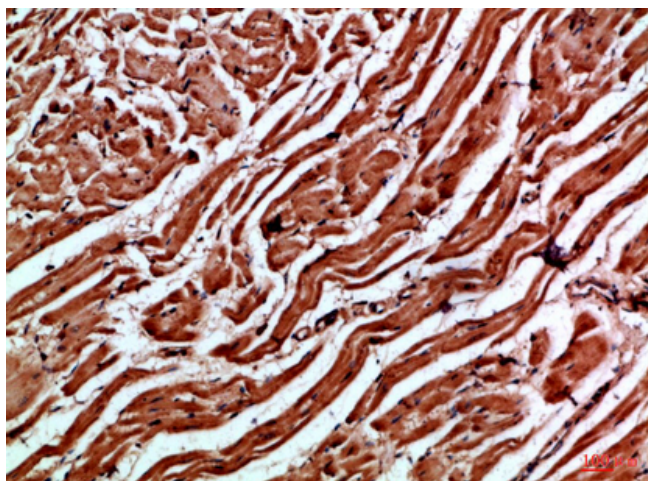


Cytoglobin Polyclonal Antibody

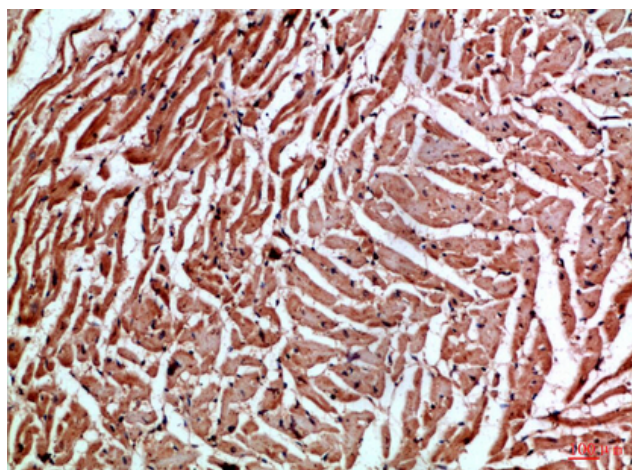
Catalog No	YP-Ab-10730
Isotype	IgG
Reactivity	Human;Mouse;Rat
Applications	IHC;IF;ELISA
Gene Name	CYGB STAP
Protein Name	Cytoglobin (Histoglobin) (HGb) (Stellate cell activation-associated protein)
Immunogen	Synthetic peptide from human protein at AA range: 1-60
Specificity	The antibody detects endogenous Cytoglobin
Formulation	Liquid in PBS containing 50% glycerol, 0.5% BSA and 0.02% sodium azide.
Source	Polyclonal, Rabbit,IgG
Purification	The antibody was affinity-purified from rabbit antiserum by affinity-chromatography using epitope-specific immunogen.
Dilution	IHC-p 1:50-200, ELISA 1:10000-20000. IF 1:50-200
Concentration	1 mg/ml
Purity	≥90%
Storage Stability	-20°C/1 year
Synonyms	Cytoglobin (Histoglobin;HGb;Stellate cell activation-associated protein)
Observed Band	
Cell Pathway	Cytoplasm .
Tissue Specificity	Ubiquitously expressed. Highest expression in heart, stomach, bladder and small intestine.
Function	function:May have a protective function during conditions of oxidative stress. May be involved in intracellular oxygen storage or transfer.,similarity:Belongs to the globin family.,subunit:Homodimer; disulfide-linked.,tissue specificity:Ubiquitously expressed. Highest expression in heart, stomach, bladder and small intestine.,
Background	This gene encodes a globin protein found in vertebrate cells. The encoded protein is described as a hexacoordinate hemoglobin which binds ligand differently from the pentacoordinate hemoglobins involved in oxygen transport, and may be involved in protection during oxidative stress. This gene is located on chromosome 17 in the same region as a retinal gene which is mutated in progressive rod-cone degeneration, but in the opposite orientation. [provided by RefSeq, Jan 2012],
matters needing attention	Avoid repeated freezing and thawing!

**Usage suggestions**

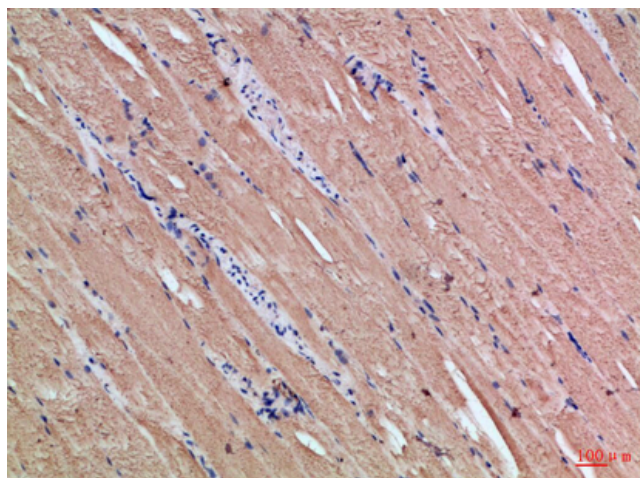
This product can be used in immunological reaction related experiments. For more information, please consult technical personnel.

Products Images

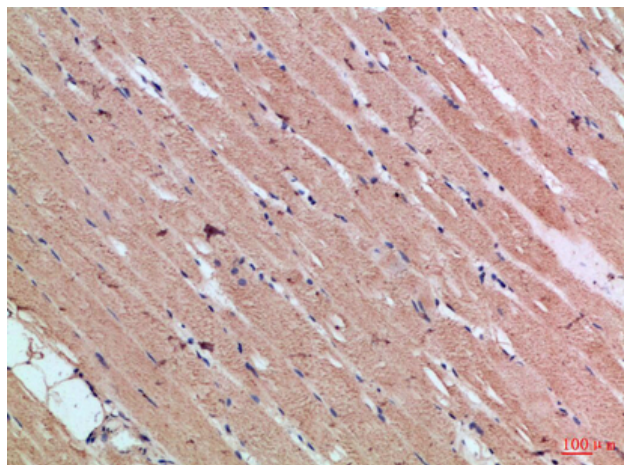
Immunohistochemical analysis of paraffin-embedded Human-heart, antibody was diluted at 1:100



Immunohistochemical analysis of paraffin-embedded Human-heart, antibody was diluted at 1:100



Immunohistochemical analysis of paraffin-embedded Human-skeletal-muscle, antibody was diluted at 1:100



Immunohistochemical analysis of paraffin-embedded Human-skeletal-muscle, antibody was diluted at 1:100