

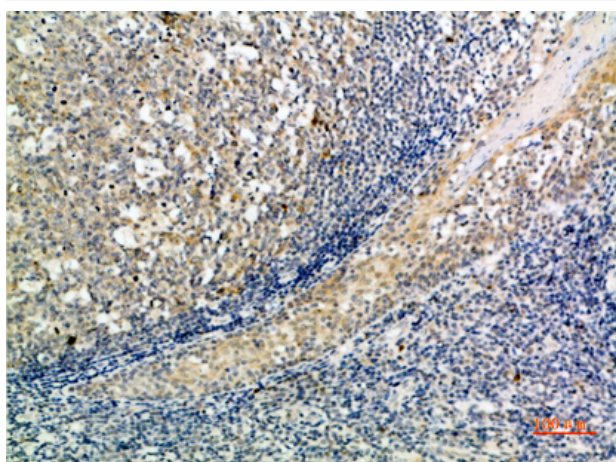


ATG10 Polyclonal Antibody

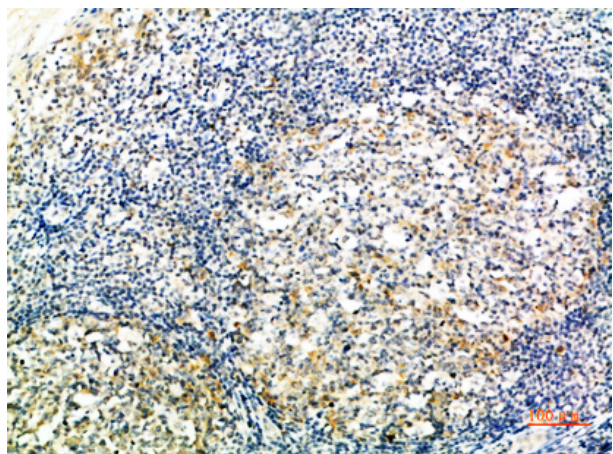
Catalog No	YP-Ab-10725
Isotype	IgG
Reactivity	Human;Rat;Mouse;
Applications	IHC;IF;ELISA
Gene Name	ATG10 APG10L PP12616
Protein Name	Ubiquitin-like-conjugating enzyme ATG10 (EC 6.3.2.-) (Autophagy-related protein 10) (APG10-like)
Immunogen	Synthetic peptide from human protein at AA range: 1-50
Specificity	The antibody detects endogenous ATG10
Formulation	Liquid in PBS containing 50% glycerol, 0.5% BSA and 0.02% sodium azide.
Source	Polyclonal, Rabbit,IgG
Purification	The antibody was affinity-purified from rabbit antiserum by affinity-chromatography using epitope-specific immunogen.
Dilution	IHC-p 1:50-200, ELISA 1:10000-20000. IF 1:50-200
Concentration	1 mg/ml
Purity	≥90%
Storage Stability	-20°C/1 year
Synonyms	Ubiquitin-like-conjugating enzyme ATG10 (EC 6.3.2.-;Autophagy-related protein 10;APG10-like)
Observed Band	
Cell Pathway	Cytoplasm .
Tissue Specificity	Placenta,Testis,Thymus,Uterus,
Function	function:Plays a role in autophagy (By similarity). ATG12-conjugating enzyme (E2-like enzyme), likely serves as an ATG5-recognition molecule.,similarity:Belongs to the ATG10 family.,subunit:Interacts with MAP1LC3A. By interacting with MAP1LC3A, it plays a role in the conjugation of ATG12 to ATG5. Also able to directly interact either with ATG5 or ATG7.,
Background	Autophagy is a process for the bulk degradation of cytosolic compartments by lysosomes. ATG10 is an E2-like enzyme involved in 2 ubiquitin-like modifications essential for autophagosome formation: ATG12 (MIM 609608)-ATG5 (MIM 604261) conjugation and modification of a soluble form of MAP-LC3 (MAP1LC3A; MIM 601242), a homolog of yeast Apg8, to a membrane-bound form (Nemoto et al., 2003 [PubMed 12890687]).[supplied by OMIM, Mar 2008],
matters needing attention	Avoid repeated freezing and thawing!

**Usage suggestions**

This product can be used in immunological reaction related experiments. For more information, please consult technical personnel.

Products Images

Immunohistochemical analysis of paraffin-embedded human-tonsil, antibody was diluted at 1:200



Immunohistochemical analysis of paraffin-embedded human-tonsil, antibody was diluted at 1:200