



# ADI1 Polyclonal Antibody

<b>Catalog No</b>	YP-Ab-10722
<b>Isotype</b>	IgG
<b>Reactivity</b>	Human;Mouse;Rat
<b>Applications</b>	IHC;IF;ELISA
<b>Gene Name</b>	ADI1 MTCBP1 HMFT1638
<b>Protein Name</b>	1,2-dihydroxy-3-keto-5-methylthiopentene dioxygenase (EC 1.13.11.54) (Acireductone dioxygenase (Fe(2+)-requiring)) (ARD) (Fe-ARD) (Membrane-type 1 matrix metalloproteinase cytoplasmic tail-binding pro
<b>Immunogen</b>	The antiserum was produced against synthesized peptide derived from the Internal region of human ADI1. AA range:71-120
<b>Specificity</b>	The antibody detects endogenous ADI1
<b>Formulation</b>	Liquid in PBS containing 50% glycerol, 0.5% BSA and 0.02% sodium azide.
<b>Source</b>	Polyclonal, Rabbit,IgG
<b>Purification</b>	The antibody was affinity-purified from rabbit antiserum by affinity-chromatography using epitope-specific immunogen.
<b>Dilution</b>	IHC-p 1:50-200, ELISA 1:10000-20000. IF 1:50-200
<b>Concentration</b>	1 mg/ml
<b>Purity</b>	≥90%
<b>Storage Stability</b>	-20°C/1 year
<b>Synonyms</b>	1,2-dihydroxy-3-keto-5-methylthiopentene dioxygenase (EC 1.13.11.54;Acireductone dioxygenase (Fe(2+)-requiring);ARD;Fe-ARD;Membrane-type 1 matrix metalloproteinase cytoplasmic tail-binding protein 1;MTCBP-1;Submergence-induced protein-like factor;Sip-L)
<b>Observed Band</b>	
<b>Cell Pathway</b>	Cytoplasm . Nucleus . Cell membrane ; Peripheral membrane protein ; Cytoplasmic side . Localizes to the plasma membrane when complexed to MMP14. .
<b>Tissue Specificity</b>	Detected in heart, colon, lung, stomach, brain, spleen, liver, skeletal muscle and kidney.
<b>Function</b>	cofactor: Binds 1 nickel ion per monomer. Can also use other divalent metal cations.,function: Has aci-reductone dioxygenase (ARD) activity and can function in the 5-methylthioadenosine (MTA) methionine salvage pathway. Down-regulates cell migration mediated by MMP14. Necessary for hepatitis C virus replication in an otherwise non-permissive cell line.,pathway: Amino-acid biosynthesis; L-methionine biosynthesis via salvage pathway; L-methionine from (S)-methyl-5-thio-alpha-D-ribose 1-phosphate: step 5/6.,similarity: Belongs to the



aci-reductone dioxygenase (ARD) family., subunit: Interacts with MMP14., tissue specificity: Detected in heart, colon, lung, stomach, brain, spleen, liver, skeletal muscle and kidney.,

#### Background

This gene encodes an enzyme that belongs to the aci-reductone dioxygenase family of metal-binding enzymes, which are involved in methionine salvage. This enzyme may regulate mRNA processing in the nucleus, and may carry out different functions depending on its localization. Related pseudogenes have been defined on chromosomes 8 and 20. Alternative splicing results in multiple transcript variants encoding different isoforms. [provided by RefSeq, Apr 2015],

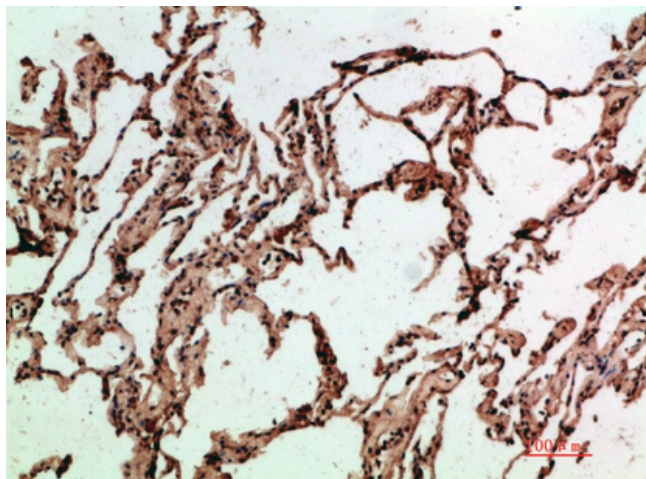
#### matters needing attention

Avoid repeated freezing and thawing!

#### Usage suggestions

This product can be used in immunological reaction related experiments. For more information, please consult technical personnel.

### Products Images



Immunohistochemical analysis of paraffin-embedded human-lung, antibody was diluted at 1:200