



Chordin Polyclonal Antibody

Catalog No	YP-Ab-10719
Isotype	IgG
Reactivity	Human;Mouse;Rat
Applications	IHC;IF;ELISA
Gene Name	CHRD UNQ217/PRO243
Protein Name	Chordin
Immunogen	The antiserum was produced against synthesized peptide derived from the C-terminal region of human CHRD. AA range:905-954
Specificity	The antibody detects endogenous Chordin
Formulation	Liquid in PBS containing 50% glycerol, 0.5% BSA and 0.02% sodium azide.
Source	Polyclonal, Rabbit,IgG
Purification	The antibody was affinity-purified from rabbit antiserum by affinity-chromatography using epitope-specific immunogen.
Dilution	IHC-p 1:50-200, ELISA 1:10000-20000. IF 1:50-200
Concentration	1 mg/ml
Purity	≥90%
Storage Stability	-20°C/1 year
Synonyms	Chordin
Observed Band	
Cell Pathway	Secreted .
Tissue Specificity	Expressed at the highest level in liver.
Function	alternative products:Experimental confirmation may be lacking for some isoforms,function:Dorsalizing factor. Key developmental protein that dorsalizes early vertebrate embryonic tissues by binding to ventralizing TGF-beta family bone morphogenetic proteins (BMPs) and sequestering them in latent complexes.,PTM:Cleaved by tolloid proteases; cleavage participates to dorsoventral patterning during early development.,similarity:Belongs to the chordin family.,similarity:Contains 4 CHRD domains.,similarity:Contains 4 VWFC domains.,subunit:Interacts with TWSG1 and/or BMP4.,tissue specificity:Expressed at the highest level in liver.,
Background	This gene encodes a secreted protein that dorsalizes early vertebrate embryonic tissues by binding to ventralizing TGF-beta-like bone morphogenetic proteins and sequestering them in latent complexes. The encoded protein may also have roles in organogenesis and during adulthood. It has been suggested that this gene could be a candidate gene for Cornelia de Lange syndrome. Reduced expression



of this gene results in enhanced bone regeneration. Alternative splicing results in multiple transcript variants. Other alternative splice variants have been described but their full length sequence has not been determined. [provided by RefSeq, Jan 2015],

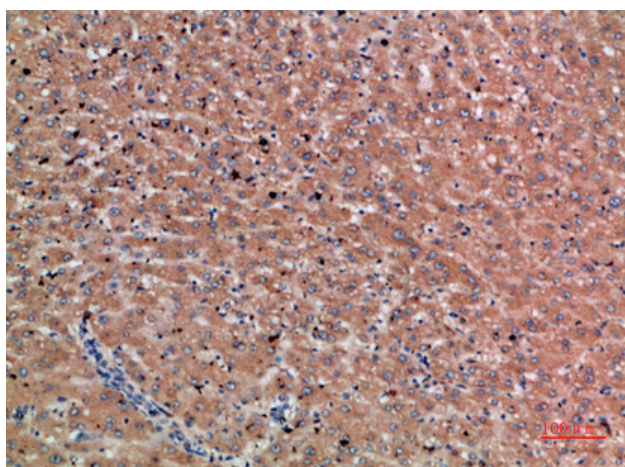
matters needing attention

Avoid repeated freezing and thawing!

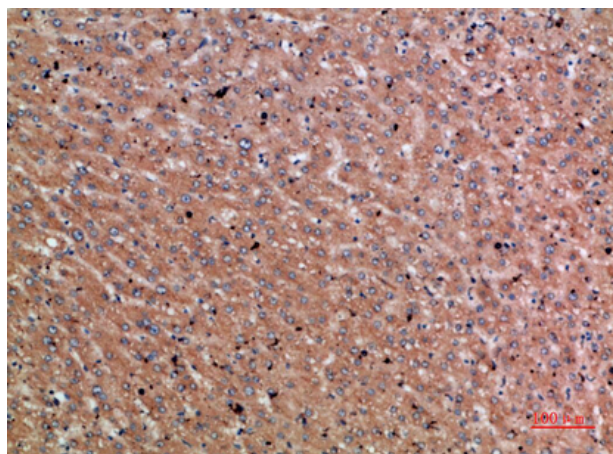
Usage suggestions

This product can be used in immunological reaction related experiments. For more information, please consult technical personnel.

Products Images



Immunohistochemical analysis of paraffin-embedded human-liver-cancer, antibody was diluted at 1:200



Immunohistochemical analysis of paraffin-embedded human-liver-cancer, antibody was diluted at 1:200