

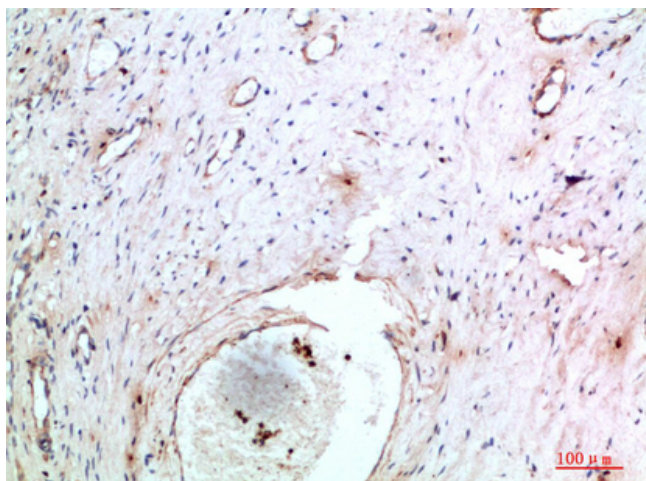


Abin-2 Polyclonal Antibody

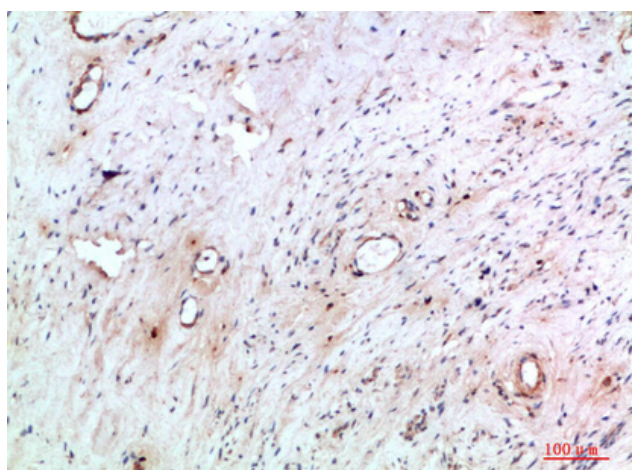
Catalog No	YP-Ab-10712
Isotype	IgG
Reactivity	Human;Mouse;Rat
Applications	IHC;IF;ELISA
Gene Name	TNIP2 ABIN2 FLIP1
Protein Name	TNFAIP3-interacting protein 2 (A20-binding inhibitor of NF-kappa-B activation 2) (ABIN-2) (Fetal liver LKB1-interacting protein)
Immunogen	Synthetic peptide from human protein at AA range: 61-110
Specificity	The antibody detects endogenous Abin-2
Formulation	Liquid in PBS containing 50% glycerol, 0.5% BSA and 0.02% sodium azide.
Source	Polyclonal, Rabbit,IgG
Purification	The antibody was affinity-purified from rabbit antiserum by affinity-chromatography using epitope-specific immunogen.
Dilution	IHC-p 1:50-200, ELISA 1:10000-20000. IF 1:50-200
Concentration	1 mg/ml
Purity	≥90%
Storage Stability	-20°C/1 year
Synonyms	TNFAIP3-interacting protein 2 (A20-binding inhibitor of NF-kappa-B activation 2;ABIN-2;Fetal liver LKB1-interacting protein)
Observed Band	
Cell Pathway	Cytoplasm . Nucleus .
Tissue Specificity	Ubiquitously expressed in all tissues examined.
Function	function:Inhibits NF-kappa-B activation by blocking the interaction of RIPK1 with its downstream effector IKBKG. Forms a ternary complex with NFKB1 and MAP3K8 but appears to function upstream of MAP3K8 in the TLR4 signaling pathway that regulates MAP3K8 activation.,subunit:Interacts with STK11, TNFAIP3, IKBKG, NFKB1, MAP3K8 and RIPK1.,tissue specificity:Ubiquitously expressed in all tissues examined.,
Background	This gene encodes a protein which acts as an inhibitor of NFkappaB activation. The encoded protein is also involved in MAP/ERK signaling pathway in specific cell types. It may be involved in apoptosis of endothelial cells. Alternative splicing results in multiple transcript variants. A pseudogene related to this gene is located on the X chromosome.[provided by RefSeq, May 2014],
matters needing attention	Avoid repeated freezing and thawing!

**Usage suggestions**

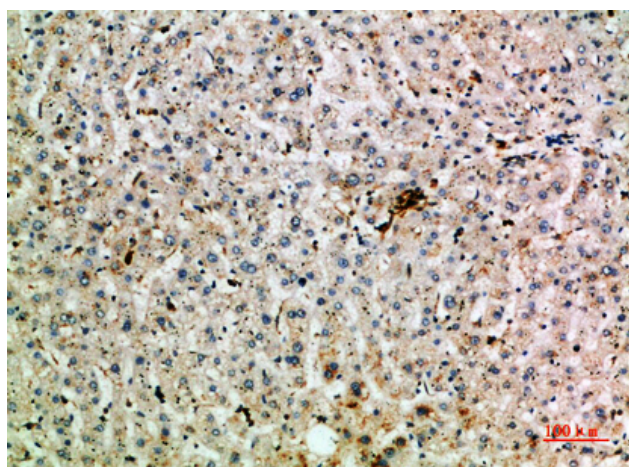
This product can be used in immunological reaction related experiments. For more information, please consult technical personnel.

Products Images

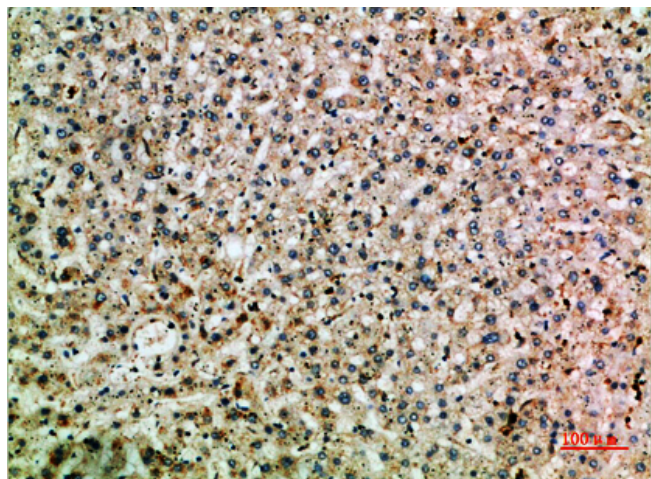
Immunohistochemical analysis of paraffin-embedded human-cervical-cancer, antibody was diluted at 1:200



Immunohistochemical analysis of paraffin-embedded human-cervical-cancer, antibody was diluted at 1:200



Immunohistochemical analysis of paraffin-embedded human-liver, antibody was diluted at 1:200



Immunohistochemical analysis of paraffin-embedded human-liver, antibody was diluted at 1:200