

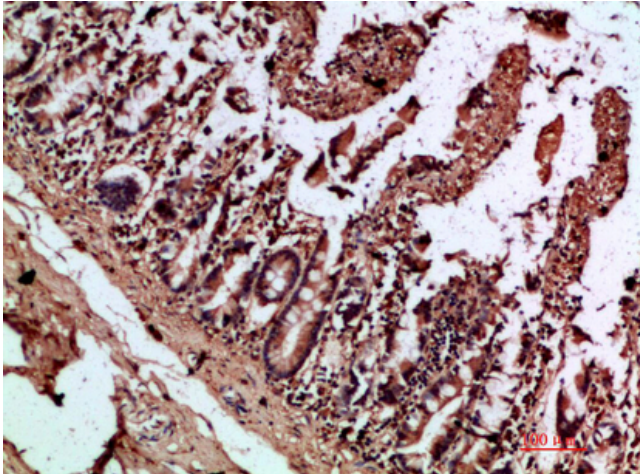


IL-17C Polyclonal Antibody

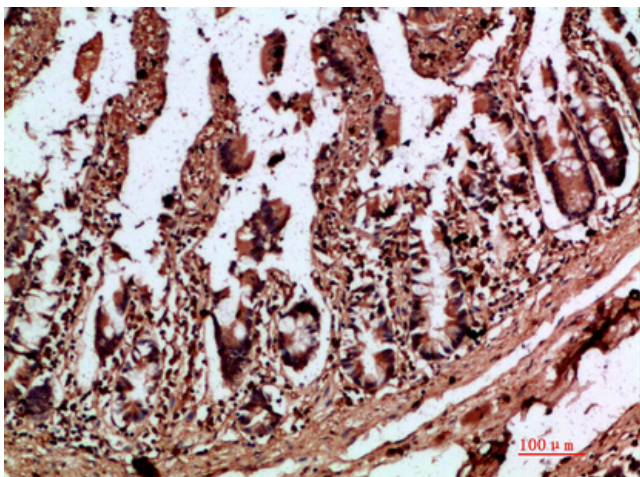
Catalog No	YP-Ab-10704
Isotype	IgG
Reactivity	Human;Rat;Mouse;
Applications	IHC;IF;ELISA
Gene Name	IL17C UNQ561/PRO1122
Protein Name	Interleukin-17C (IL-17C) (Cytokine CX2)
Immunogen	Synthetic peptide from human protein at AA range: 81-130
Specificity	The antibody detects endogenous IL-17C
Formulation	Liquid in PBS containing 50% glycerol, 0.5% BSA and 0.02% sodium azide.
Source	Polyclonal, Rabbit,IgG
Purification	The antibody was affinity-purified from rabbit antiserum by affinity-chromatography using epitope-specific immunogen.
Dilution	IHC-p 1:50-200, ELISA 1:10000-20000. IF 1:50-200
Concentration	1 mg/ml
Purity	≥90%
Storage Stability	-20°C/1 year
Synonyms	Interleukin-17C (IL-17C;Cytokine CX2)
Observed Band	
Cell Pathway	Secreted.
Tissue Specificity	Lung,
Function	function:Stimulates the release of tumor necrosis factor alpha and IL-1-beta from the monocytic cell line THP-1.,online information:Interleukin-17 entry,similarity:Belongs to the IL-17 family.,
Background	The protein encoded by this gene is a T cell-derived cytokine that shares the sequence similarity with IL17. This cytokine was reported to stimulate the release of tumor necrosis factor alpha and interleukin 1 beta from a monocytic cell line. The expression of this cytokine was found to be restricted to activated T cells. [provided by RefSeq, Jul 2008],
matters needing attention	Avoid repeated freezing and thawing!
Usage suggestions	This product can be used in immunological reaction related experiments. For more information, please consult technical personnel.



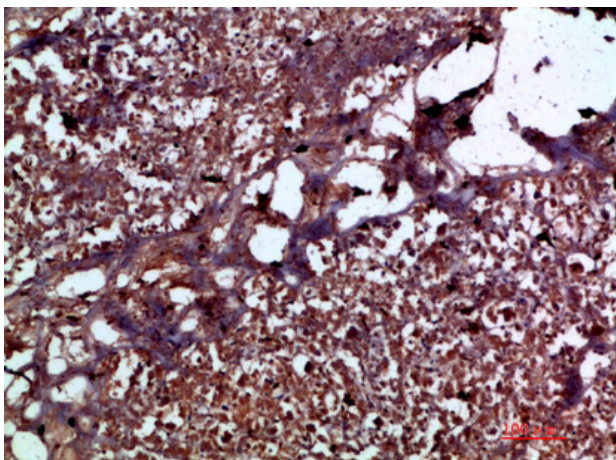
Products Images



Immunohistochemical analysis of paraffin-embedded human-colon, antibody was diluted at 1:200



Immunohistochemical analysis of paraffin-embedded human-colon, antibody was diluted at 1:200



Immunohistochemical analysis of paraffin-embedded human-pancreas, antibody was diluted at 1:200