

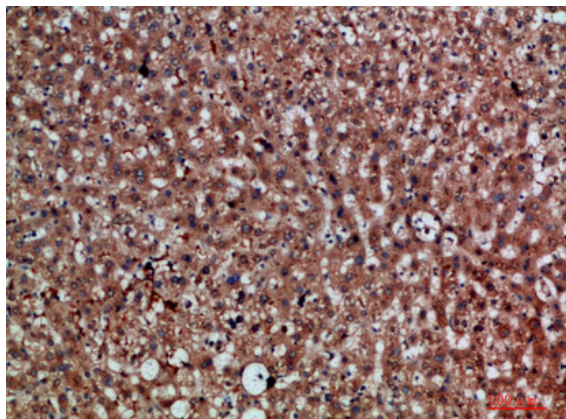


CDNF Polyclonal Antibody

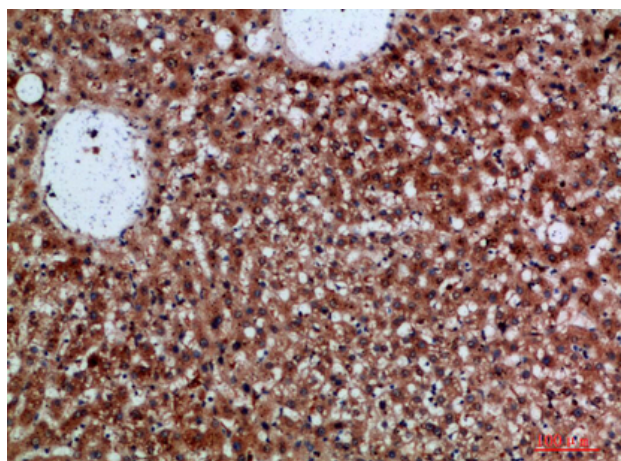
Catalog No	YP-Ab-10697
Isotype	IgG
Reactivity	Human;Rat;Mouse;
Applications	IHC;IF;ELISA
Gene Name	CDNF ARMETL1
Protein Name	Cerebral dopamine neurotrophic factor (ARMET-like protein 1) (Conserved dopamine neurotrophic factor)
Immunogen	Synthetic peptide from human protein at AA range: 31-80
Specificity	The antibody detects endogenous CDNF
Formulation	Liquid in PBS containing 50% glycerol, 0.5% BSA and 0.02% sodium azide.
Source	Polyclonal, Rabbit,IgG
Purification	The antibody was affinity-purified from rabbit antiserum by affinity-chromatography using epitope-specific immunogen.
Dilution	IHC-p 1:50-200, ELISA 1:10000-20000. IF 1:50-200
Concentration	1 mg/ml
Purity	≥90%
Storage Stability	-20°C/1 year
Synonyms	Cerebral dopamine neurotrophic factor (ARMET-like protein 1;Conserved dopamine neurotrophic factor)
Observed Band	
Cell Pathway	Secreted .
Tissue Specificity	Widely expressed in neuronal and non-neuronal tissues. In the brain, highest levels in the optic nerve and corpus callosum.
Function	
Background	CDNF (Cerebral Dopamine Neurotrophic Factor) is a Protein Coding gene. Trophic factor for dopamine neurons. Prevents the 6-hydroxydopamine (6-OHDA)-induced degeneration of dopaminergic neurons. When administered after 6-OHDA-lesioning, restores the dopaminergic function and prevents the degeneration of dopaminergic neurons in substantia nigra (By similarity).
matters needing attention	Avoid repeated freezing and thawing!
Usage suggestions	This product can be used in immunological reaction related experiments. For more information, please consult technical personnel.



Products Images



Immunohistochemical analysis of paraffin-embedded human-liver, antibody was diluted at 1:200



Immunohistochemical analysis of paraffin-embedded human-liver, antibody was diluted at 1:200