

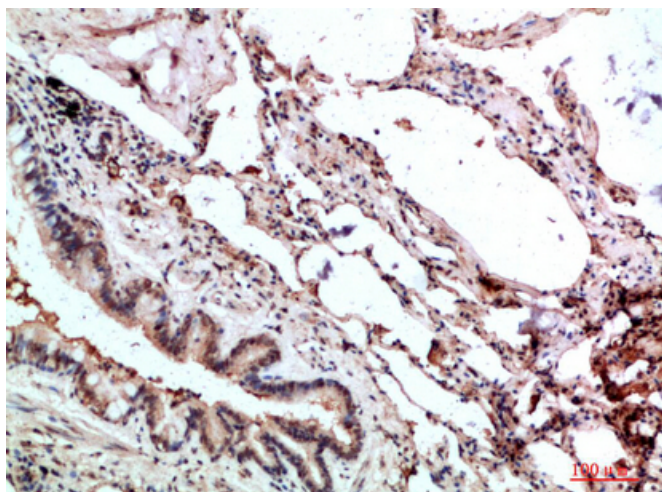


# GMF-γ Polyclonal Antibody

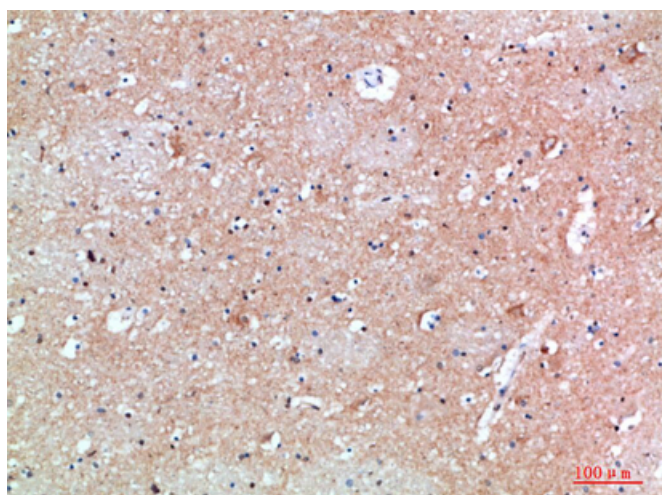
<b>Catalog No</b>	YP-Ab-10696
<b>Isotype</b>	IgG
<b>Reactivity</b>	Human;Rat;Mouse;
<b>Applications</b>	IHC;IF;ELISA
<b>Gene Name</b>	GMFG
<b>Protein Name</b>	Glia maturation factor gamma (GMF-gamma)
<b>Immunogen</b>	Synthetic peptide from human protein at AA range: 1-50
<b>Specificity</b>	The antibody detects endogenous GMF-γ
<b>Formulation</b>	Liquid in PBS containing 50% glycerol, 0.5% BSA and 0.02% sodium azide.
<b>Source</b>	Polyclonal, Rabbit,IgG
<b>Purification</b>	The antibody was affinity-purified from rabbit antiserum by affinity-chromatography using epitope-specific immunogen.
<b>Dilution</b>	IHC-p 1:50-200, ELISA 1:10000-20000. IF 1:50-200
<b>Concentration</b>	1 mg/ml
<b>Purity</b>	≥90%
<b>Storage Stability</b>	-20°C/1 year
<b>Synonyms</b>	Glia maturation factor gamma (GMF-gamma)
<b>Observed Band</b>	
<b>Cell Pathway</b>	intracellular,
<b>Tissue Specificity</b>	Expressed predominantly in lung, heart and placenta.
<b>Function</b>	similarity:Belongs to the actin-binding proteins ADF family. GMF subfamily.,similarity:Contains 1 ADF-H domain.,tissue specificity:Expressed predominantly in lung, heart and placenta.,
<b>Background</b>	similarity:Belongs to the actin-binding proteins ADF family. GMF subfamily.,similarity:Contains 1 ADF-H domain.,tissue specificity:Expressed predominantly in lung, heart and placenta.,
<b>matters needing attention</b>	Avoid repeated freezing and thawing!
<b>Usage suggestions</b>	This product can be used in immunological reaction related experiments. For more information, please consult technical personnel.



## Products Images



Immunohistochemical analysis of paraffin-embedded human-lung, antibody was diluted at 1:200



Immunohistochemical analysis of paraffin-embedded human-brain, antibody was diluted at 1:200