

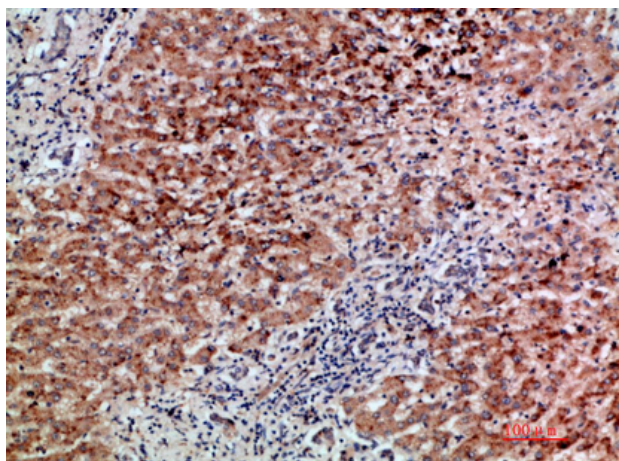


BMP-9 Polyclonal Antibody

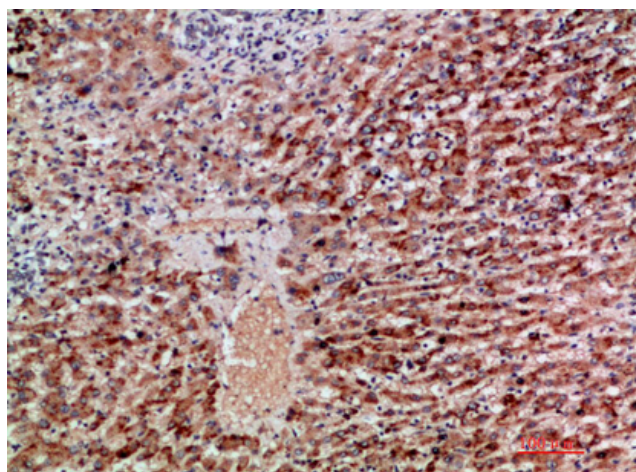
Catalog No	YP-Ab-10688
Isotype	IgG
Reactivity	Human;Mouse
Applications	IHC;IF;ELISA
Gene Name	GDF2 BMP9
Protein Name	Growth/differentiation factor 2 (GDF-2) (Bone morphogenetic protein 9) (BMP-9)
Immunogen	Synthetic peptide from human protein at AA range: 371-420
Specificity	The antibody detects endogenous BMP-9
Formulation	Liquid in PBS containing 50% glycerol, 0.5% BSA and 0.02% sodium azide.
Source	Polyclonal, Rabbit,IgG
Purification	The antibody was affinity-purified from rabbit antiserum by affinity-chromatography using epitope-specific immunogen.
Dilution	IHC-p 1:50-200, ELISA 1:10000-20000. IF 1:50-200
Concentration	1 mg/ml
Purity	≥90%
Storage Stability	-20°C/1 year
Synonyms	Growth/differentiation factor 2 (GDF-2;Bone morphogenetic protein 9;BMP-9)
Observed Band	
Cell Pathway	Secreted .
Tissue Specificity	Detected in blood plasma (at protein level).
Function	function:Could be involved in bone formation.,online information:GDF2 entry,similarity:Belongs to the TGF-beta family.,subunit:Homodimer; disulfide-linked.,
Background	This gene encodes a secreted ligand of the TGF-beta (transforming growth factor-beta) superfamily of proteins. Ligands of this family bind various TGF-beta receptors leading to recruitment and activation of SMAD family transcription factors that regulate gene expression. The encoded preproprotein is proteolytically processed to generate each subunit of the disulfide-linked homodimer. This protein regulates cartilage and bone development, angiogenesis and differentiation of cholinergic central nervous system neurons. Mutations in this gene are associated with hereditary hemorrhagic telangiectasia. [provided by RefSeq, Jul 2016],
matters needing attention	Avoid repeated freezing and thawing!

**Usage suggestions**

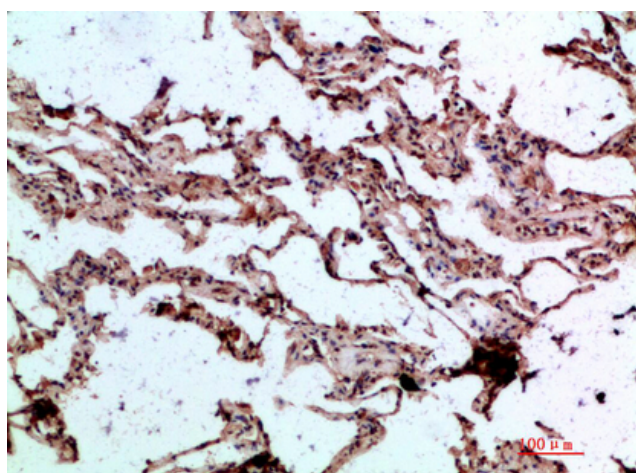
This product can be used in immunological reaction related experiments. For more information, please consult technical personnel.

Products Images

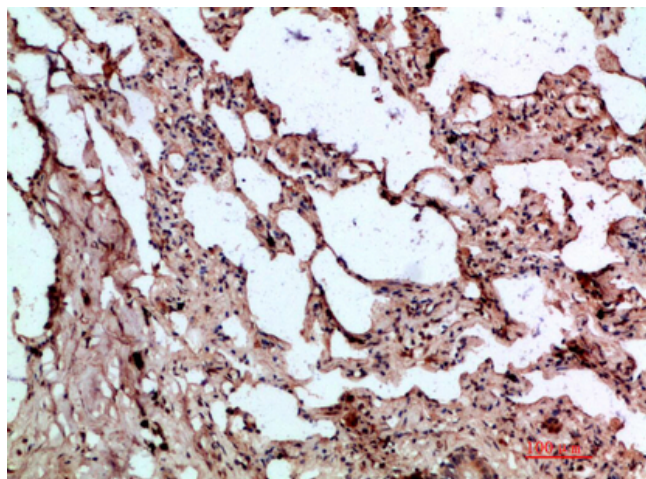
Immunohistochemical analysis of paraffin-embedded human-liver-cancer, antibody was diluted at 1:200



Immunohistochemical analysis of paraffin-embedded human-liver-cancer, antibody was diluted at 1:200



Immunohistochemical analysis of paraffin-embedded human-lung, antibody was diluted at 1:200



Immunohistochemical analysis of paraffin-embedded human-lung, antibody was diluted at 1:200