



# CD297 Polyclonal Antibody

<b>Catalog No</b>	YP-Ab-10677
<b>Isotype</b>	IgG
<b>Reactivity</b>	Human;Rat;Mouse;
<b>Applications</b>	IHC;IF;ELISA
<b>Gene Name</b>	ART4 DO DOK1
<b>Protein Name</b>	Ecto-ADP-ribosyltransferase 4 (EC 2.4.2.31) (ADP-ribosyltransferase C2 and C3 toxin-like 4) (ARTC4) (Dombrock blood group carrier molecule) (Mono(ADP-ribosyl)transferase 4) (NAD(P)(+)-arginine ADP-ri
<b>Immunogen</b>	Synthetic peptide from human protein at AA range: 181-230
<b>Specificity</b>	The antibody detects endogenous CD297
<b>Formulation</b>	Liquid in PBS containing 50% glycerol, 0.5% BSA and 0.02% sodium azide.
<b>Source</b>	Polyclonal, Rabbit,IgG
<b>Purification</b>	The antibody was affinity-purified from rabbit antiserum by affinity-chromatography using epitope-specific immunogen.
<b>Dilution</b>	IHC-p 1:50-200, ELISA 1:10000-20000. IF 1:50-200
<b>Concentration</b>	1 mg/ml
<b>Purity</b>	≥90%
<b>Storage Stability</b>	-20°C/1 year
<b>Synonyms</b>	Ecto-ADP-ribosyltransferase 4 (EC 2.4.2.31;ADP-ribosyltransferase C2 and C3 toxin-like 4;ARTC4;Dombrock blood group carrier molecule;Mono(ADP-ribosyl)transferase 4;NAD(P)(+)-arginine ADP-ribosyltransferase 4;CD antigen CD297)
<b>Observed Band</b>	
<b>Cell Pathway</b>	Cell membrane; Lipid-anchor, GPI-anchor.
<b>Tissue Specificity</b>	Expressed in spleen and T-cells.
<b>Function</b>	catalytic activity:NAD(+) + protein-L-arginine = nicotinamide + N(omega)-(ADP-D-ribosyl)-protein-L-arginine.,catalytic activity:NADP(+) + protein-L-arginine = nicotinamide + N(omega)-((2'-phospho-ADP)-D-ribosyl)-protein-L-arginine.,online information:Blood group antigen gene mutation database,polymorphism:DO is responsible for the Dombrock blood group system. The molecular basis of the Do(a)/Do(b) blood group antigen is a single variation in position 265; Asn-265 corresponds to Do(a) and Asp-265 to Do(b). It is also responsible for the antigens Gregory [Gy(a)], Holley [Hy] and Joseph [Jo(a)].,similarity:Belongs to the Arg-specific ADP-ribosyltransferase family.,tissue specificity:Expressed in spleen and T-cells.,



## Background

This gene encodes a protein that contains a mono-ADP-ribosylation (ART) motif. It is a member of the ADP-ribosyltransferase gene family but enzymatic activity has not been demonstrated experimentally. Antigens of the Dombrock blood group system are located on the gene product, which is glycosylphosphatidylinositol-anchored to the erythrocyte membrane. Allelic variants, some of which lead to adverse transfusion reactions, are known. [provided by RefSeq, Jul 2008],

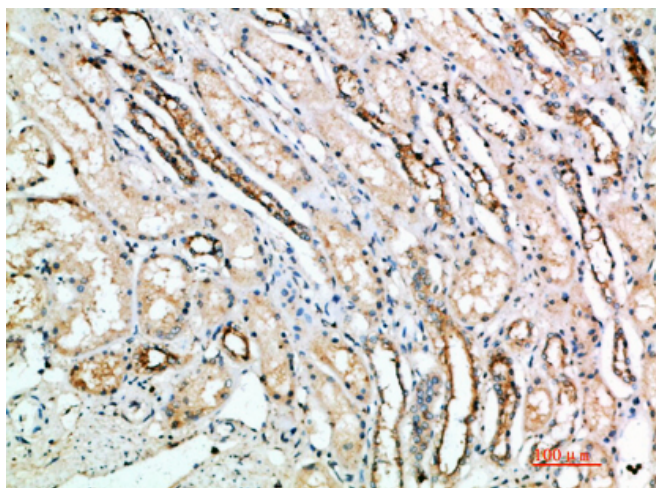
## matters needing attention

Avoid repeated freezing and thawing!

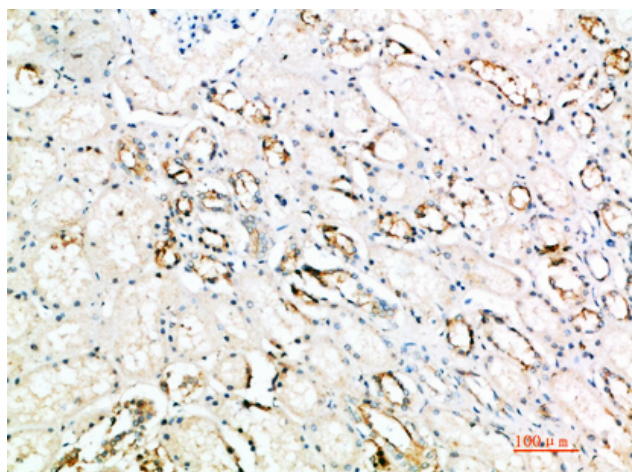
## Usage suggestions

This product can be used in immunological reaction related experiments. For more information, please consult technical personnel.

## Products Images



Immunohistochemical analysis of paraffin-embedded human-kidney, antibody was diluted at 1:200



Immunohistochemical analysis of paraffin-embedded human-kidney, antibody was diluted at 1:200