



CD300e Polyclonal Antibody

Catalog No	YP-Ab-10672
Isotype	IgG
Reactivity	Human;Rat;Mouse;
Applications	IHC;IF;ELISA
Gene Name	CD300E CD300LE CLM2 CMRF35A5 IREM2
Protein Name	CMRF35-like molecule 2 (CLM-2) (CD300 antigen-like family member E) (CMRF35-A5) (Immune receptor expressed on myeloid cells 2) (IREM-2) (Polymeric immunoglobulin receptor 2) (PIgR-2) (PIgR2) (Poly-Ig
Immunogen	Synthetic peptide from human protein at AA range: 31-80
Specificity	The antibody detects endogenous CD300e
Formulation	Liquid in PBS containing 50% glycerol, 0.5% BSA and 0.02% sodium azide.
Source	Polyclonal, Rabbit,IgG
Purification	The antibody was affinity-purified from rabbit antiserum by affinity-chromatography using epitope-specific immunogen.
Dilution	IHC-p 1:50-200, ELISA 1:10000-20000. IF 1:50-200
Concentration	1 mg/ml
Purity	≥90%
Storage Stability	-20°C/1 year
Synonyms	CMRF35-like molecule 2 (CLM-2;CD300 antigen-like family member E;CMRF35-A5;Immune receptor expressed on myeloid cells 2;IREM-2;Polymeric immunoglobulin receptor 2;PIgR-2;PIgR2;Poly-Ig receptor 2;CD antigen CD300e)
Observed Band	
Cell Pathway	Cell membrane; Single-pass type I membrane protein.
Tissue Specificity	Present on the surface of mature hematopoietic cells of the monocyte and myeloid lineages (at protein level).
Function	function:Probably acts as an activating receptor.,PTM:N-glycosylated.,similarity:Belongs to the CD300 family.,similarity:Contains 1 Ig-like V-type (immunoglobulin-like) domain.,subunit:Interacts with TYROBP.,tissue specificity:Present on the surface of mature hematopoietic cells of the monocyte and myeloid lineages (at protein level).,
Background	CD300e molecule(CD300E) Homo sapiens This gene encodes a member of the CD300 glycoprotein family of cell surface proteins expressed on myeloid cells. The protein interacts with the TYRO protein tyrosine kinase-binding protein and is thought to act as an activating receptor. [provided by RefSeq, Nov 2012],

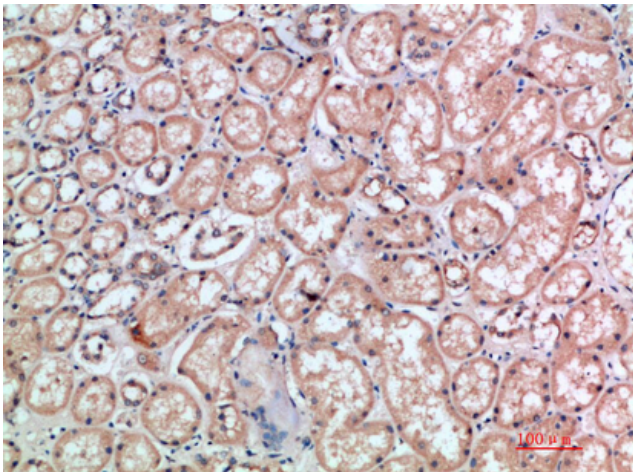
matters needing attention

Avoid repeated freezing and thawing!

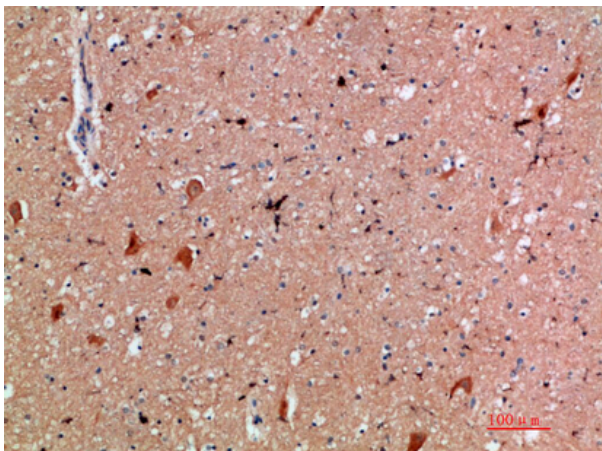
Usage suggestions

This product can be used in immunological reaction related experiments. For more information, please consult technical personnel.

Products Images



Immunohistochemical analysis of paraffin-embedded human-kidney, antibody was diluted at 1:200



Immunohistochemical analysis of paraffin-embedded human-brain, antibody was diluted at 1:200