



Gremlin-2 Polyclonal Antibody

Catalog No	YP-Ab-10648
Isotype	IgG
Reactivity	Human;Mouse
Applications	WB;IHC;IF;ELISA
Gene Name	GREM2 CKTSF1B2 DAND3 PRDC
Protein Name	Gremlin-2 (Cysteine knot superfamily 1, BMP antagonist 2) (DAN domain family member 3) (Protein related to DAN and cerberus)
Immunogen	The antiserum was produced against synthesized peptide derived from the Internal region of human GREM2. AA range:71-120
Specificity	The antibody detects endogenous Gremlin-2
Formulation	Liquid in PBS containing 50% glycerol, 0.5% BSA and 0.02% sodium azide.
Source	Polyclonal, Rabbit,IgG
Purification	The antibody was affinity-purified from rabbit antiserum by affinity-chromatography using epitope-specific immunogen.
Dilution	WB 1:500-2000,IHC-p 1:500-200, ELISA 1:10000-20000. IF 1:50-200
Concentration	1 mg/ml
Purity	≥90%
Storage Stability	-20°C/1 year
Synonyms	Gremlin-2 (Cysteine knot superfamily 1, BMP antagonist 2;DAN domain family member 3;Protein related to DAN and cerberus)
Observed Band	19kD
Cell Pathway	Secreted .
Tissue Specificity	Brain,Colon,
Function	function:Cytokine that inhibits the activity of BMP2 and BMP4 in a dose-dependent manner. Antagonized BMP4-induced suppression of progesterone production in granulosa cells.,similarity:Belongs to the DAN family.,similarity:Contains 1 CTCK (C-terminal cystine knot-like) domain.,subunit:Interacts with BMP2 and BMP4.,
Background	This gene encodes a member of the BMP (bone morphogenic protein) antagonist family. Like BMPs, BMP antagonists contain cystine knots and typically form homo- and heterodimers. The CAN (cerberus and dan) subfamily of BMP antagonists, to which this gene belongs, is characterized by a C-terminal cystine knot with an eight-membered ring. The antagonistic effect of the secreted glycosylated protein encoded by this gene is likely due to its direct binding to BMP proteins. As an antagonist of BMP, this gene may play a role in regulating organogenesis, body patterning, and tissue differentiation. [provided by RefSeq,



Jul 2008],

matters needing attention

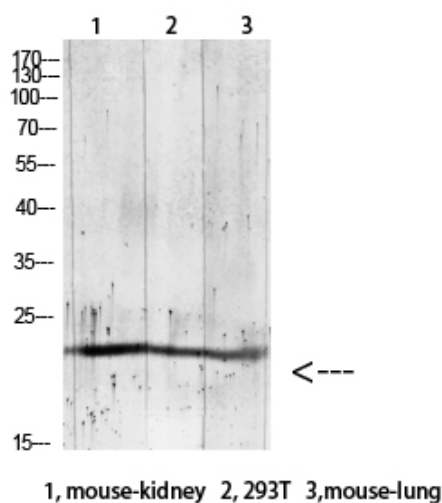
Avoid repeated freezing and thawing!

Usage suggestions

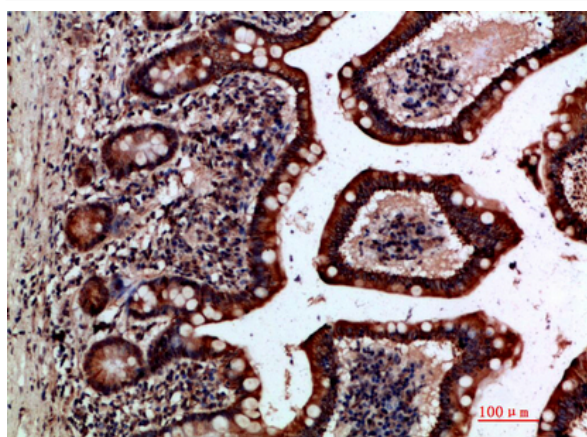
This product can be used in immunological reaction related experiments. For more information, please consult technical personnel.



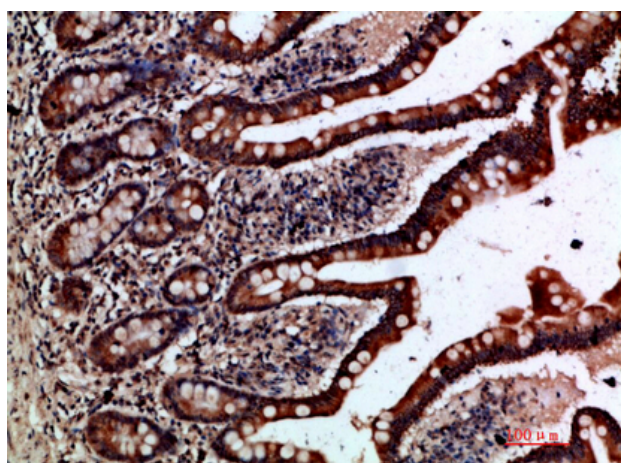
Products Images



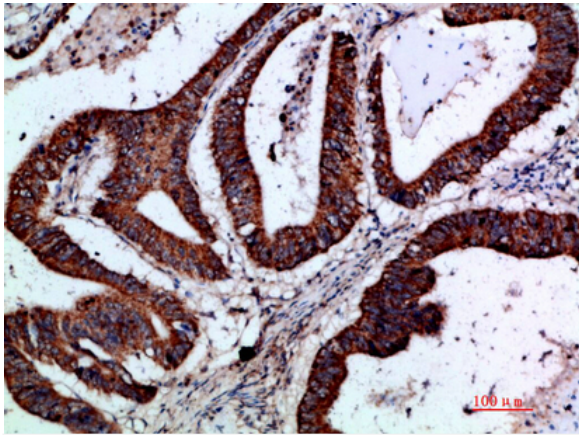
Western blot analysis of RAT-brain lysate, antibody was diluted at 1000. Secondary antibody(catalog#:RS0002) was diluted at 1:20000



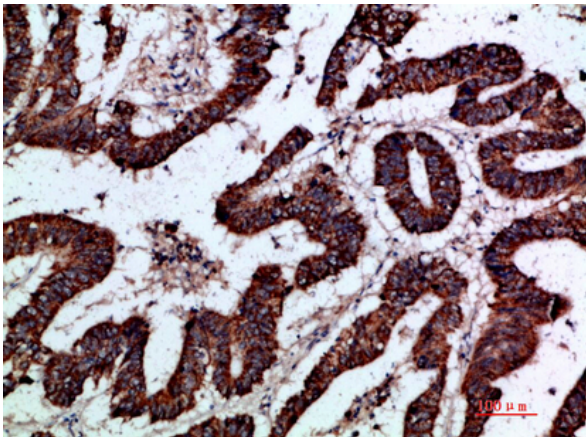
Immunohistochemical analysis of paraffin-embedded human-small-intestine, antibody was diluted at 1:200



Immunohistochemical analysis of paraffin-embedded human-small-intestine, antibody was diluted at 1:200



Immunohistochemical analysis of paraffin-embedded human-colon-cancer, antibody was diluted at 1:200



Immunohistochemical analysis of paraffin-embedded human-colon-cancer, antibody was diluted at 1:200