



# CD64 Polyclonal Antibody

|                           |   |
|---------------------------|---|
| <b>Catalog No</b>         | YP-Ab-10645   |
| <b>Isotype</b>            | IgG   |
| <b>Reactivity</b>         | Human;Rat;Mouse;  |
| <b>Applications</b>       | WB;IHC;IF;ELISA   |
| <b>Gene Name</b>          | FCGR1A FCG1 FCGR1 IGFR1   |
| <b>Protein Name</b>       | High affinity immunoglobulin gamma Fc receptor I (IgG Fc receptor I) (Fc-gamma RI) (FcRI) (Fc-gamma RIA) (FcgammaRIa) (CD antigen CD64)   |
| <b>Immunogen</b>          | Synthetic peptide from human protein at AA range: 230-280   |
| <b>Specificity</b>        | The antibody detects endogenous CD64  |
| <b>Formulation</b>        | Liquid in PBS containing 50% glycerol, 0.5% BSA and 0.02% sodium azide.   |
| <b>Source</b>             | Polyclonal, Rabbit,IgG  |
| <b>Purification</b>       | The antibody was affinity-purified from rabbit antiserum by affinity-chromatography using epitope-specific immunogen.   |
| <b>Dilution</b>           | WB 1:500-2000,IHC-p 1:500-200, ELISA 1:10000-20000. IF 1:50-200   |
| <b>Concentration</b>      | 1 mg/ml   |
| <b>Purity</b>             | ≥90%  |
| <b>Storage Stability</b>  | -20°C/1 year  |
| <b>Synonyms</b>           | High affinity immunoglobulin gamma Fc receptor I (IgG Fc receptor I;Fc-gamma RI;FcRI;Fc-gamma RIA;FcgammaRIa;CD antigen CD64)   |
| <b>Observed Band</b>      | 45kD  |
| <b>Cell Pathway</b>       | Cell membrane ; Single-pass type I membrane protein . Stabilized at the cell membrane through interaction with FCER1G.  |
| <b>Tissue Specificity</b> | Monocyte/macrophage specific.   |
| <b>Function</b>           | function:High affinity receptor for the Fc region of immunoglobulins gamma. Functions in both innate and adaptive immune responses.,online information:FCGR1A mutation db,PTM:N-glycosylated.,PTM:Phosphorylated on serine residues.,similarity:Belongs to the immunoglobulin superfamily. FCGR1 family.,similarity:Contains 3 Ig-like C2-type (immunoglobulin-like) domains.,subcellular location:Stabilized at the cell membrane through interaction with FCER1G.,subunit:Interacts with FCERG1; forms a functional signaling complex. Interacts with FLNA; prevents FCGR1A degradation. Interacts with EPB41L2, LAT and PPL.,tissue specificity:Monocyte/macrophage specific., |
| <b>Background</b>         | This gene encodes a protein that plays an important role in the immune response. This protein is a high-affinity Fc-gamma receptor. The gene is one of three related gene family members located on chromosome 1. [provided by RefSeq, Jul 2008],   |

**matters needing attention**

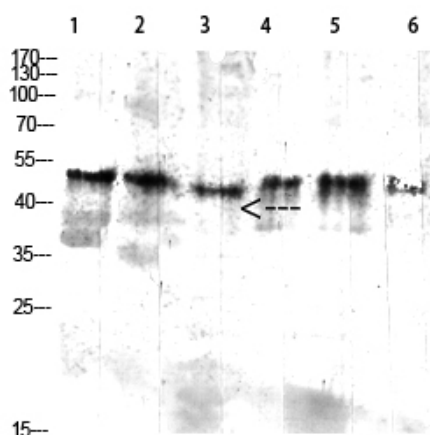
Avoid repeated freezing and thawing!

**Usage suggestions**

This product can be used in immunological reaction related experiments. For more information, please consult technical personnel.

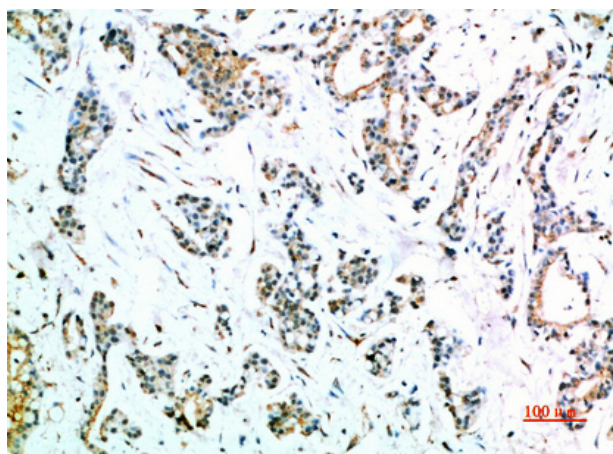


## Products Images

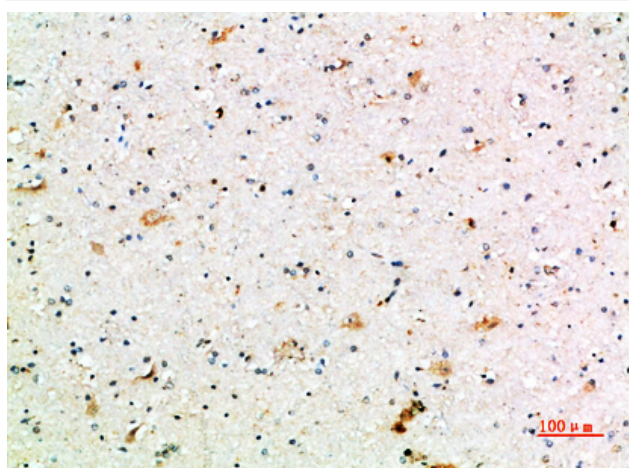


1 mouse-kidney 2 mouse-kidney 3 mouse-lung  
4 mouse-heart 5 293T 6 293T

Western blot analysis of mouse-kidney lysate, antibody was diluted at 2000. Secondary antibody(catalog#:RS0002) was diluted at 1:20000



Immunohistochemical analysis of paraffin-embedded human-stomach-cancer, antibody was diluted at 1:200



Immunohistochemical analysis of paraffin-embedded human-brain, antibody was diluted at 1:200