



# MYOZ2 Polyclonal Antibody

<b>Catalog No</b>	YP-Ab-10627
<b>Isotype</b>	IgG
<b>Reactivity</b>	Human;Mouse;Rat
<b>Applications</b>	WB;ELISA;IHC
<b>Gene Name</b>	MYOZ2 C4orf5
<b>Protein Name</b>	myozenin 2
<b>Immunogen</b>	The antiserum was produced against synthesized peptide derived from the Internal region of human MYOZ2. AA range:21-70
<b>Specificity</b>	The antibody detects endogenous MYOZ2 protein
<b>Formulation</b>	Liquid in PBS containing 50% glycerol, 0.5% BSA and 0.02% sodium azide.
<b>Source</b>	Polyclonal, Rabbit,IgG
<b>Purification</b>	The antibody was affinity-purified from rabbit antiserum by affinity-chromatography using epitope-specific immunogen.
<b>Dilution</b>	WB 1:500-2000;IHC-p 1:50-300; ELISA 2000-20000
<b>Concentration</b>	1 mg/ml
<b>Purity</b>	≥90%
<b>Storage Stability</b>	-20°C/1 year
<b>Synonyms</b>	MYOZ2 C4orf5
<b>Observed Band</b>	30kD
<b>Cell Pathway</b>	Cytoplasm, myofibril, sarcomere, Z line . Colocalizes with ACTN1 and PPP3CA at the Z-line of heart and skeletal muscle. .
<b>Tissue Specificity</b>	Expressed specifically in heart and skeletal muscle.
<b>Function</b>	function:Myozenins may serve as intracellular binding proteins involved in linking Z-disk proteins such as alpha-actinin, gamma-filamin, TCAP/telethonin, LDB3/ZASP and localizing calcineurin signaling to the sarcomere. Plays an important role in the modulation of calcineurin signaling. May play a role in myofibrillogenesis.,similarity:Belongs to the myozenin family.,subcellular location:Colocalizes with ACTN1 and PPP3CA at the Z-line of heart and skeletal muscle.,subunit:Interacts via its C-terminus with spectrin repeats 3 and 4 of ACTN2. Interacts with ATCN1, LDB3, MYOT and PPP3CA.,tissue specificity:Expressed specifically in heart and skeletal muscle.,
<b>Background</b>	The protein encoded by this gene belongs to a family of sarcomeric proteins that bind to calcineurin, a phosphatase involved in calcium-dependent signal transduction in diverse cell types. These family members tether calcineurin to alpha-actinin at the z-line of the sarcomere of cardiac and skeletal muscle cells, and thus they are important for calcineurin signaling. Mutations in this gene cause



cardiomyopathy familial hypertrophic type 16, a hereditary heart disorder.  
[provided by RefSeq, Aug 2011],

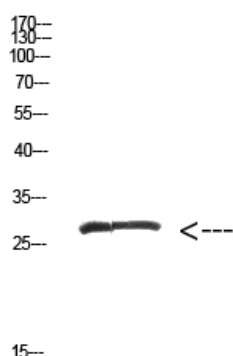
#### matters needing attention

Avoid repeated freezing and thawing!

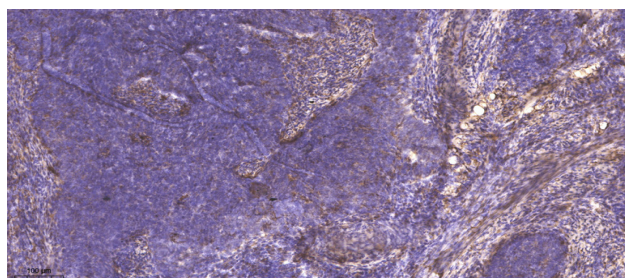
#### Usage suggestions

This product can be used in immunological reaction related experiments. For more information, please consult technical personnel.

### Products Images



Western Blot analysis of hepg2 cells using Antibody diluted at 500. Secondary antibody(catalog#:RS0002) was diluted at 1:20000



Immunohistochemical analysis of paraffin-embedded human cervical carcinoma. 1, Antibody was diluted at 1:200(4° overnight). 2, Tris-EDTA,pH9.0 was used for antigen retrieval. 3,Secondary antibody was diluted at 1:200(room temperature, 45min).