



CLECSF6 Polyclonal Antibody

Catalog No	YP-Ab-10615
Isotype	IgG
Reactivity	Human;Rat;Mouse;
Applications	WB;ELISA
Gene Name	CLEC4A
Protein Name	CLECSF6
Immunogen	The antiserum was produced against synthesized peptide derived from the C-terminal region of human CLEC4A. AA range:161-210
Specificity	CLECSF6 Polyclonal Antibody detects endogenous levels of CLECSF6
Formulation	Liquid in PBS containing 50% glycerol, 0.5% BSA and 0.02% sodium azide.
Source	Polyclonal, Rabbit,IgG
Purification	The antibody was affinity-purified from rabbit antiserum by affinity-chromatography using epitope-specific immunogen.
Dilution	WB 1:500-2000, ELISA 1:10000-20000
Concentration	1 mg/ml
Purity	≥90%
Storage Stability	-20°C/1 year
Synonyms	C-type lectin domain family 4 member A (C-type lectin DDB27) (C-type lectin superfamily member 6) (Dendritic cell immunoreceptor) (Lectin-like immunoreceptor)
Observed Band	28kD
Cell Pathway	Cell membrane ; Single-pass type II membrane protein ; Extracellular side .
Tissue Specificity	Expressed preferentially in hematopoietic tissues. Expressed in all circulating Ag-presenting cells such as dendritic cells, myeloid cells, monocytes, macrophages, B-cells and epidermal Langerhans cells (at protein level). Expressed in peripheral blood leukocytes, neutrophils, moderate quantities in spleen, lymph node, and bone marrow, and at very low levels in thymus.
Function	domain:Contains 1 copy of a cytoplasmic motif that is referred to as the immunoreceptor tyrosine-based inhibitor motif (ITIM). This motif is involved in modulation of cellular responses. The phosphorylated ITIM motif can bind the SH2 domain of several SH2-containing phosphatases.,function:May be involved in regulating immune reactivity. May play a role in modulating dendritic cells (DC) differentiation and/or maturation. May be involved via its ITIM motif (immunoreceptor tyrosine-based inhibitory motifs) in the inhibition of B-cell-receptor-mediated calcium mobilization and protein tyrosine phosphorylation.,induction:Agonists of neutrophils GM-CSF, IL-3, IL-4 and IL-13 up-regulated mRNA expression of isoform 2.,online



information:DCIR,similarity:Contains 1 C-type lectin domain.,subunit:May interact with PTPN6 via its ITIM motif.,tissue specificity:Expressed in dendritic cells, myeloid ce

Background

This gene encodes a member of the C-type lectin/C-type lectin-like domain (CTL/CTLD) superfamily. Members of this family share a common protein fold and have diverse functions, such as cell adhesion, cell-cell signalling, glycoprotein turnover, and roles in inflammation and immune response. The encoded type 2 transmembrane protein may play a role in inflammatory and immune response. Multiple transcript variants encoding distinct isoforms have been identified for this gene. This gene is closely linked to other CTL/CTLD superfamily members on chromosome 12p13 in the natural killer gene complex region. [provided by RefSeq, Jul 2008],

matters needing attention

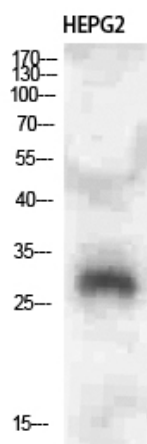
Avoid repeated freezing and thawing!

Usage suggestions

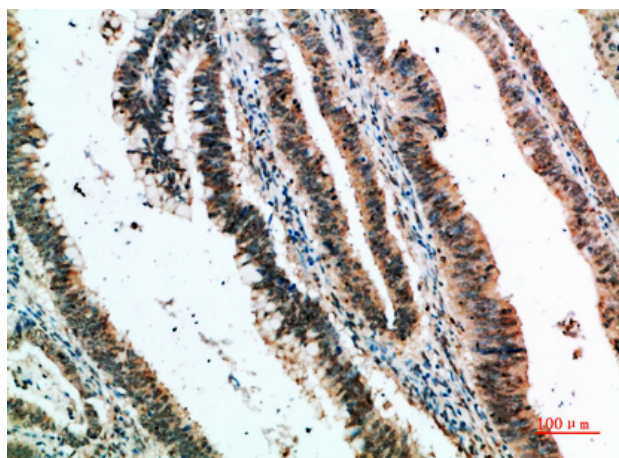
This product can be used in immunological reaction related experiments. For more information, please consult technical personnel.



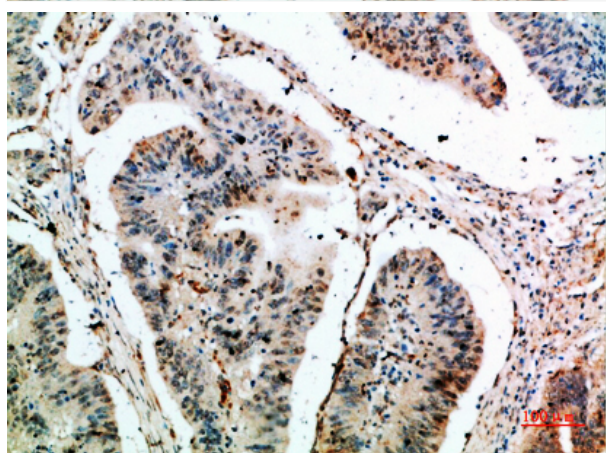
Products Images



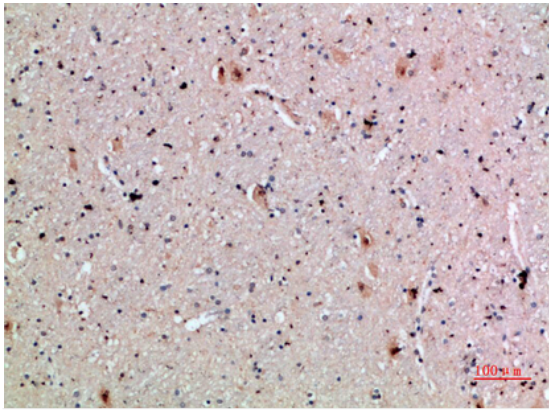
Western Blot analysis of HEPG2 cells using CLECSF6 Polyclonal Antibody diluted at 1:500. Secondary antibody(catalog#:RS0002) was diluted at 1:20000



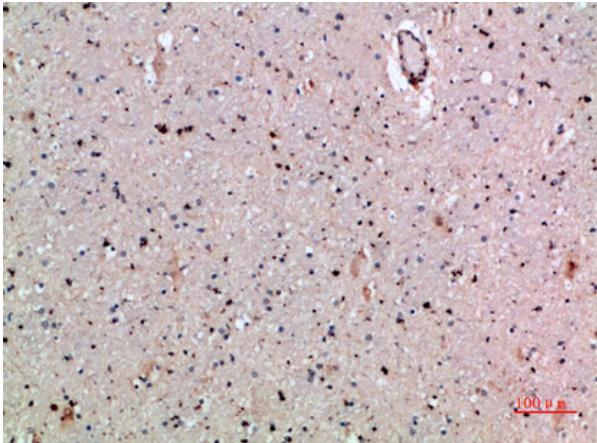
Immunohistochemical analysis of paraffin-embedded human-colon-cancer, antibody was diluted at 1:200



Immunohistochemical analysis of paraffin-embedded human-colon-cancer, antibody was diluted at 1:200



Immunohistochemical analysis of paraffin-embedded human-brain, antibody was diluted at 1:200



Immunohistochemical analysis of paraffin-embedded human-brain, antibody was diluted at 1:200