



# NLRX1 Polyclonal Antibody

<b>Catalog No</b>	YP-Ab-10611
<b>Isotype</b>	IgG
<b>Reactivity</b>	Human;Mouse;Rat
<b>Applications</b>	WB;IHC;IF;ELISA
<b>Gene Name</b>	NLRX1
<b>Protein Name</b>	NLRX1
<b>Immunogen</b>	The antiserum was produced against synthesized peptide derived from the Internal region of human NLRX1. AA range:581-630
<b>Specificity</b>	NLRX1 Polyclonal Antibody detects endogenous levels of NLRX1
<b>Formulation</b>	Liquid in PBS containing 50% glycerol, 0.5% BSA and 0.02% sodium azide.
<b>Source</b>	Polyclonal, Rabbit,IgG
<b>Purification</b>	The antibody was affinity-purified from rabbit antiserum by affinity-chromatography using epitope-specific immunogen.
<b>Dilution</b>	WB 1:500-2000, IHC-p 1:50-300, ELISA 1:10000-20000. IF 1:50-200
<b>Concentration</b>	1 mg/ml
<b>Purity</b>	≥90%
<b>Storage Stability</b>	-20°C/1 year
<b>Synonyms</b>	NLR family member X1 (Caterpillar protein 11.3;CLR11.3;Nucleotide-binding oligomerization domain protein 26;Nucleotide-binding oligomerization domain protein 5;Nucleotide-binding oligomerization domain protein 9)
<b>Observed Band</b>	108kD
<b>Cell Pathway</b>	Mitochondrion outer membrane .
<b>Tissue Specificity</b>	Ubiquitously expressed. Strongest expression in mammary gland, heart and muscle. Detected in HeLa, HEK293T, THP-1, HL-60, Raji and Jurkat cell lines (at protein level).
<b>Function</b>	function:Participates in antiviral signaling. Acts as a negative regulator of MAVS-mediated antiviral responses, through the inhibition of the virus-induced RLH (RIG-like helicase)-MAVS interaction (PubMed:18200010). Has no inhibitory function on NF-Kappa-B and type 1 interferon signaling pathways, but enhances NF-Kappa-B and JUN N-terminal kinase dependent signaling through the production of reactive oxygen species (PubMed:18219313).,sequence caution:Translated as Trp.,sequence caution:Translation N-terminally extended.,similarity:Belongs to the NLRP family.,similarity:Contains 1 NACHT domain.,similarity:Contains 4 LRR (leucine-rich) repeats.,subunit:Interacts with MAVS.,tissue specificity:Ubiquitously expressed. Strongest expression in mammary gland, heart and muscle. Detected in HELA, 293T, THP-1, HL60, RAJI, and JURKAT cell lines (at protein level).,

**Background**

The protein encoded by this gene is a member of the NLR family and localizes to the outer mitochondrial membrane. The encoded protein is a regulator of mitochondrial antiviral responses. Three transcript variants encoding the same protein have been found for this gene. [provided by RefSeq, Aug 2013],

**matters needing attention**

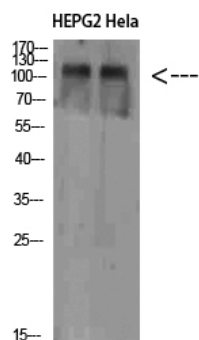
Avoid repeated freezing and thawing!

**Usage suggestions**

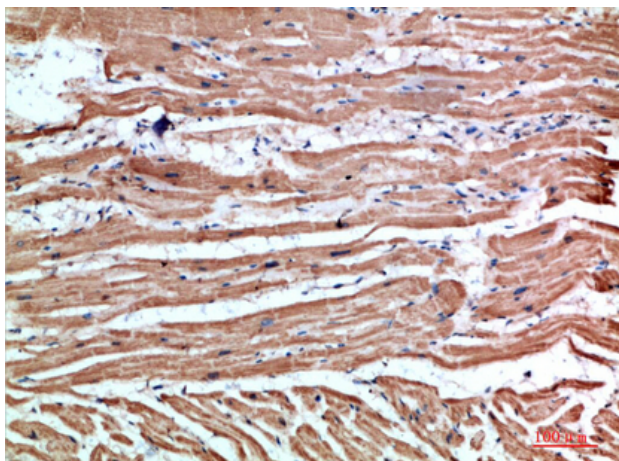
This product can be used in immunological reaction related experiments. For more information, please consult technical personnel.



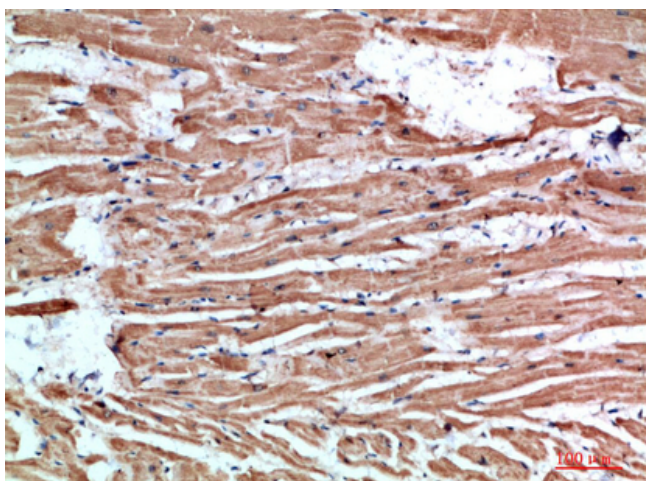
## Products Images



Western Blot analysis of HEPG2 Hela cells using NLRX1 Polyclonal Antibody diluted at 1:1000. Secondary antibody(catalog#:RS0002) was diluted at 1:20000

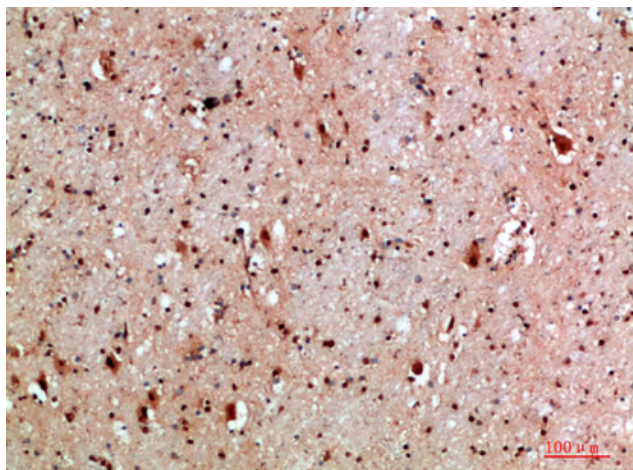


Immunohistochemical analysis of paraffin-embedded human-heart, antibody was diluted at 1:200



Immunohistochemical analysis of paraffin-embedded human-heart, antibody was diluted at 1:200

Immunohistochemical analysis of paraffin-embedded human-brain, antibody was diluted at 1:200



Immunohistochemical analysis of paraffin-embedded human-brain, antibody was diluted at 1:200

