



Plasminogen receptor Polyclonal Antibody

Catalog No	YP-Ab-10610
Isotype	IgG
Reactivity	Human;Rat
Applications	WB;IHC
Gene Name	PLGRKT
Protein Name	Plasminogen receptor
Immunogen	The antiserum was produced against synthesized peptide derived from the Internal region of human PLGRKT. AA range:1-50
Specificity	Plasminogen receptor Polyclonal Antibody detects endogenous levels of Plasminogen receptor
Formulation	Liquid in PBS containing 50% glycerol, 0.5% BSA and 0.02% sodium azide.
Source	Polyclonal, Rabbit,IgG
Purification	The antibody was affinity-purified from rabbit antiserum by affinity-chromatography using epitope-specific immunogen.
Dilution	WB 1:500-2000;IHC-p 1:50-300
Concentration	1 mg/ml
Purity	≥90%
Storage Stability	-20°C/1 year
Synonyms	Plasminogen receptor (KT) (Plg-R(KT))
Observed Band	17kD
Cell Pathway	Cell membrane ; Multi-pass membrane protein . Colocalizes on the cell surface with urokinase plasminogen activator surface receptor/PLAUR. .
Tissue Specificity	Expressed in peripheral blood cells and monocytes. Expressed in adrenal medulla.
Function	
Background	Plasmin dissolves the fibrin of blood clots and acts as a proteolytic factor in a variety of other processes including embryonic development, tissue remodeling, tumor invasion, and inflammation. In ovulation, weakens the walls of the Graafian follicle. It activates the urokinase-type plasminogen activator, collagenases and several complement zymogens, such as C1 and C5. Cleavage of fibronectin and laminin leads to cell detachment and apoptosis. Also cleaves fibrin, thrombospondin and von Willebrand factor. Its role in tissue remodeling and tumor invasion may be modulated by CSPG4. Binds to cells. Angiostatin is an angiogenesis inhibitor that blocks neovascularization and growth of experimental primary and metastatic tumors in vivo.



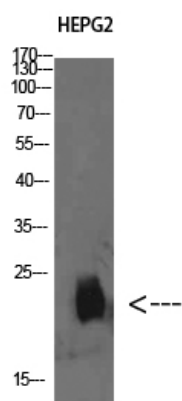
matters needing attention

Avoid repeated freezing and thawing!

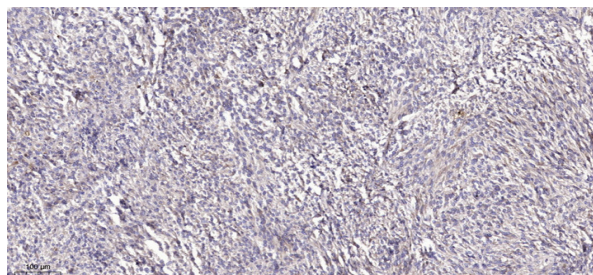
Usage suggestions

This product can be used in immunological reaction related experiments. For more information, please consult technical personnel.

Products Images



Western Blot analysis of HEPG2 cells using Plasminogen receptor Polyclonal Antibody diluted at 1:500. Secondary antibody(catalog#:RS0002) was diluted at 1:20000



Immunohistochemical analysis of paraffin-embedded human Colon cancer. 1, Antibody was diluted at 1:200(4° overnight). 2, Tris-EDTA,pH9.0 was used for antigen retrieval. 3,Secondary antibody was diluted at 1:200(room temperature, 45min).