



C8 β Polyclonal Antibody

Catalog No	YP-Ab-10609
Isotype	IgG
Reactivity	Human;Rat
Applications	WB;ELISA
Gene Name	C8B
Protein Name	C8 β
Immunogen	The antiserum was produced against synthesized peptide derived from the Internal region of human C8B. AA range:371-420
Specificity	C8 β Polyclonal Antibody detects endogenous levels of C8 β
Formulation	Liquid in PBS containing 50% glycerol, 0.5% BSA and 0.02% sodium azide.
Source	Polyclonal, Rabbit,IgG
Purification	The antibody was affinity-purified from rabbit antiserum by affinity-chromatography using epitope-specific immunogen.
Dilution	WB 1:500-2000, ELISA 1:10000-20000
Concentration	1 mg/ml
Purity	$\geq 90\%$
Storage Stability	-20°C/1 year
Synonyms	Complement component C8 beta chain (Complement component 8 subunit beta)
Observed Band	70kD
Cell Pathway	Secreted.
Tissue Specificity	Liver,Plasma,
Function	disease:Defects in C8B are a cause of complement C8 deficiency type II [MIM:120960]. Patients with deficiency of C8 suffer from recurrent bacterial infections, predominantly from Neisseria meningitidis.,function:C8 is a constituent of the membrane attack complex. C8 binds to the C5b-7 complex, forming the C5b-8 complex. C5-b8 binds C9 and acts as a catalyst in the polymerization of C9.,online information:C8B mutation db,polymorphism:The sequence shown is that of allotype C8B B.,PTM:N-glycosylated; contains one or two bound glycans. Not O-glycosylated.,similarity:Belongs to the complement C6/C7/C8/C9 family.,similarity:Contains 1 EGF-like domain.,similarity:Contains 1 LDL-receptor class A domain.,similarity:Contains 1 MACPF domain.,similarity:Contains 2 TSP type-1 domains.,subunit:C8 is composed of three chains: alpha, beta and gamma. The beta chain binds to the C8 alpha chain and to the
Background	This gene encodes one of the three subunits of the complement component 8 (C8) protein. C8 is composed of equimolar amounts of alpha, beta and gamma



subunits, which are encoded by three separate genes. C8 is one component of the membrane attack complex, which mediates cell lysis, and it initiates membrane penetration of the complex. This protein mediates the interaction of C8 with the C5b-7 membrane attack complex precursor. In humans deficiency of this protein is associated with increased risk of meningococcal infections. Alternative splicing results in multiple transcript variants. [provided by RefSeq, Jun 2013],

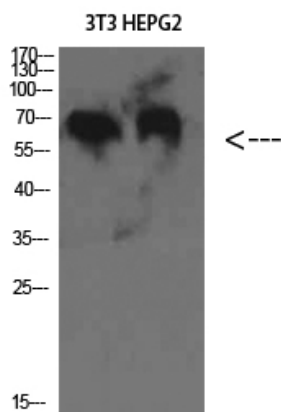
matters needing attention

Avoid repeated freezing and thawing!

Usage suggestions

This product can be used in immunological reaction related experiments. For more information, please consult technical personnel.

Products Images



Western Blot analysis of 3T3 HEPG2 cells using C8 β Polyclonal Antibody diluted at 1:2000. Secondary antibody(catalog#:RS0002) was diluted at 1:20000