



# PTH-rP Polyclonal Antibody

<b>Catalog No</b>	YP-Ab-10606
<b>Isotype</b>	IgG
<b>Reactivity</b>	Human;Rat;Mouse;
<b>Applications</b>	WB;IHC
<b>Gene Name</b>	PTH LH
<b>Protein Name</b>	PTH-rP
<b>Immunogen</b>	The antiserum was produced against synthesized peptide derived from the Internal region of human PTH LH. AA range:101-150
<b>Specificity</b>	PTH-rP Polyclonal Antibody detects endogenous levels of PTH-rP
<b>Formulation</b>	Liquid in PBS containing 50% glycerol, 0.5% BSA and 0.02% sodium azide.
<b>Source</b>	Polyclonal, Rabbit,IgG
<b>Purification</b>	The antibody was affinity-purified from rabbit antiserum by affinity-chromatography using epitope-specific immunogen.
<b>Dilution</b>	WB 1:500-2000;IHC-p 1:50-300
<b>Concentration</b>	1 mg/ml
<b>Purity</b>	≥90%
<b>Storage Stability</b>	-20°C/1 year
<b>Synonyms</b>	Parathyroid hormone-related protein (PTH-rP) (PTHrP) (Parathyroid hormone-like protein) (PLP) [Cleaved into: PTHrP[1-36]; PTHrP[38-94]; Osteostatin (PTHrP[107-139])]
<b>Observed Band</b>	25kD
<b>Cell Pathway</b>	Cytoplasm. Nucleus. Secreted.
<b>Tissue Specificity</b>	Ubiquitous. Also expressed in the mammary gland.
<b>Function</b>	alternative products:Additional isoforms seem to exist,disease:Produced by many tumors from patients with HHM (humoral hypercalcemia of malignancy).,function:Neuroendocrine peptide which is a critical regulator of cellular and organ growth, development, migration, differentiation and survival and of epithelial calcium ion transport. Regulates endochondral bone development and epithelial-mesenchymal interactions during the formation of the mammary glands and teeth.,function:Osteostatin is a potent inhibitor of osteoclastic bone resorption.,PTM:There are 3 principal secretory forms, called PTHrP[1-36], PTHrP[38-94], and osteostatin (PTHrP[107-139]) arising from endoproteolytic cleavage of the initial translation product. Each of these secretory forms is believed to have one or more of its own receptors that mediates the normal paracrine, autocrine and endocrine actions.,similarity:Belongs



## Background

parathyroid hormone like hormone(PTHrP) Homo sapiens The protein encoded by this gene is a member of the parathyroid hormone family. This hormone, via its receptor, PTHR1, regulates endochondral bone development and epithelial-mesenchymal interactions during the formation of the mammary glands and teeth. It is responsible for most cases of humoral hypercalcemia of malignancy, and mutations in this gene are associated with brachydactyly type E2 (BDE2). Alternatively spliced transcript variants have been found for this gene. There is also evidence for alternative translation initiation from non-AUG (CUG and GUG) start sites, downstream of the initiator AUG codon, resulting in nuclear forms of this hormone. [provided by RefSeq, Nov 2013],

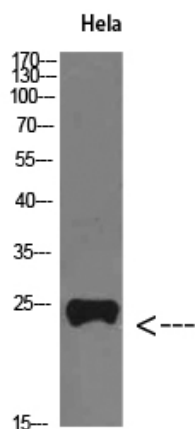
## matters needing attention

Avoid repeated freezing and thawing!

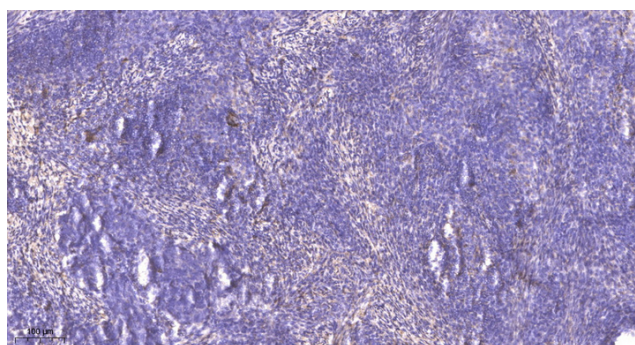
## Usage suggestions

This product can be used in immunological reaction related experiments. For more information, please consult technical personnel.

## Products Images



Western Blot analysis of Hela cells using PTH-rP Polyclonal Antibody diluted at 1:800. Secondary antibody(catalog#:RS0002) was diluted at 1:20000



Immunohistochemical analysis of paraffin-embedded human cervical carcinoma. 1, Antibody was diluted at 1:200(4° overnight). 2, Tris-EDTA,pH9.0 was used for antigen retrieval. 3,Secondary antibody was diluted at 1:200(room temperature, 45min).