



Nanos Homologue 1 (NANOS1) Polyclonal Antibody

| | |
|---------------------------|---|
| Catalog No | YP-Ab-10604 |
| Isotype | IgG |
| Reactivity | Human;Rat;Mouse; |
| Applications | WB;ELISA;IHC |
| Gene Name | NANOS1 |
| Protein Name | Nanos Homologue 1 (NANOS1) |
| Immunogen | Synthesized peptide derived from Nanos Homologue 1 (NANOS1) at AA range: 151-200 |
| Specificity | Nanos Homologue 1 (NANOS1) Polyclonal Antibody detects endogenous levels of Nanos Homologue 1 (NANOS1) |
| Formulation | Liquid in PBS containing 50% glycerol, 0.5% BSA and 0.02% sodium azide. |
| Source | Polyclonal, Rabbit,IgG |
| Purification | The antibody was affinity-purified from rabbit antiserum by affinity-chromatography using epitope-specific immunogen. |
| Dilution | WB 1:500-2000;IHC-p 1:50-300; ELISA 2000-20000 |
| Concentration | 1 mg/ml |
| Purity | ≥90% |
| Storage Stability | -20°C/1 year |
| Synonyms | Nanos homolog 1 (NOS-1) (EC_Rep1a) |
| Observed Band | 30kD |
| Cell Pathway | Cytoplasm, perinuclear region . Cytoplasm . Colocalizes with SNAPIN and PUM2 in the perinuclear region of germ cells. . |
| Tissue Specificity | Testis and ovary (at protein level). Predominantly expressed in testis. Specifically expressed during germline development. In adult tissues, it is mainly expressed in spermatogonia, the stem cells of the germline. Also expressed during meiosis in spermatocytes. Not present in late, post-meiotic stage germ cells. Expressed in fetal ovaries, while it is weakly or not expressed in mature postmeiotic oocytes, suggesting that it may be expressed in premeiotic female germ cells. Expressed at high levels only in the E-cadherin deficient cell lines. Highly expressed in lung carcinomas and mostly detected in invasive tumor cells and its expression correlates with tumor aggressiveness. |
| Function | domain:The Nanos-type zinc finger is composed of two C2HC motifs, each motif binding one molecule of zinc. It is essential for the translation repression activity of the protein.,function:May regulate translation of specific mRNAs by forming a complex with PUM2 that associates with the 3'-UTR of mRNA targets.,similarity:Belongs to the nanos family.,similarity:Contains 1 nanos-type zinc finger.,subunit:Interacts with PUM2.,tissue specificity:Predominantly expressed in testis. Specifically expressed during germline development. In adult |



tissues, it is mainly expressed in spermatogonia, the stem cells of the germline. Also expressed during meiosis in spermatocytes. Not present in late, post-meiotic stage germ cells. Expressed in fetal ovaries, while it is weakly or not expressed in mature postmeiotic oocytes, suggesting that it may be expressed in premeiotic female germ cells.,

Background

This gene encodes a CCHC-type zinc finger protein that is a member of the nanos family. This protein co-localizes with the RNA-binding protein pumilio RNA-binding family member 2 and may be involved in regulating translation as a post-transcriptional repressor. Mutations in this gene are associated with spermatogenic impairment. [provided by RefSeq, Sep 2015],

matters needing attention

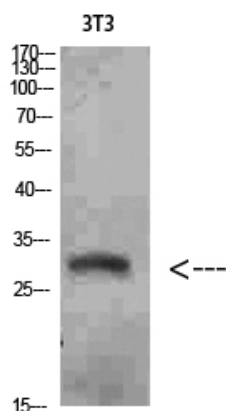
Avoid repeated freezing and thawing!

Usage suggestions

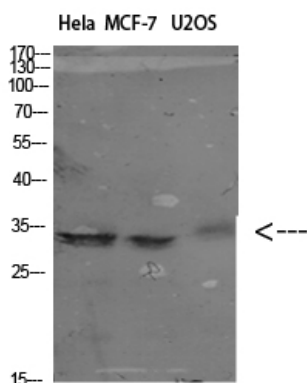
This product can be used in immunological reaction related experiments. For more information, please consult technical personnel.



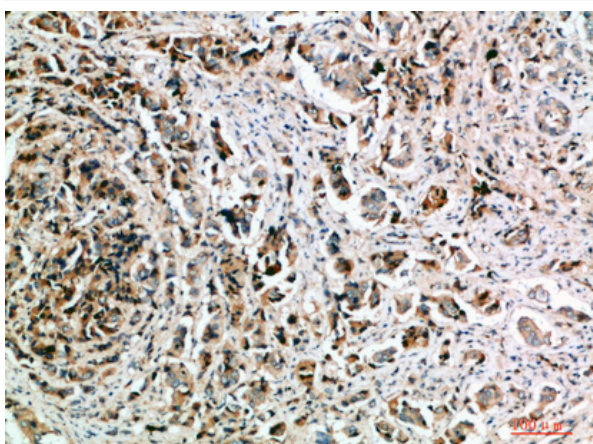
Products Images



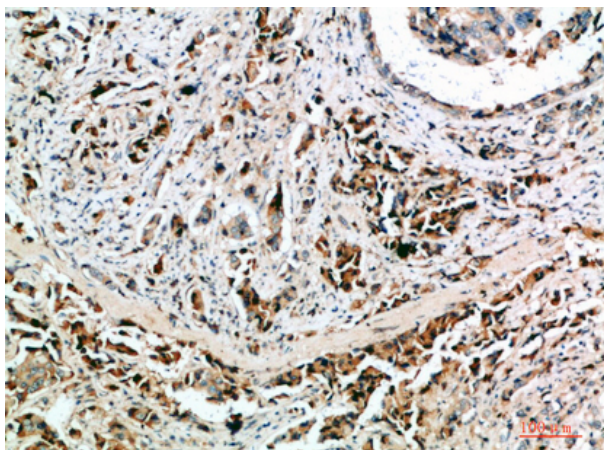
Western Blot analysis of 3T3 cells using Nanos Homologue 1 (NANOS1) Polyclonal Antibody diluted at 1:1500. Secondary antibody(catalog#:RS0002) was diluted at 1:20000



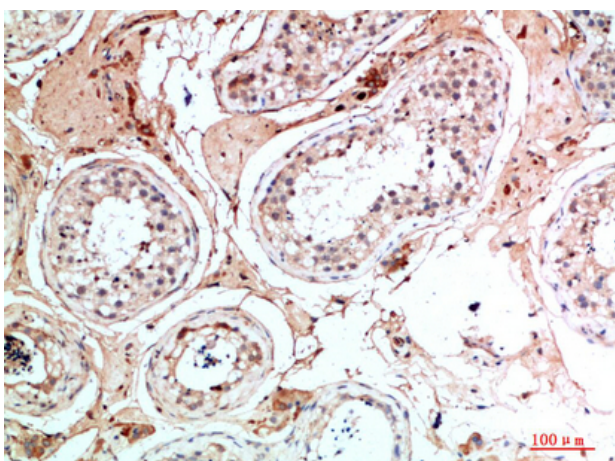
Western Blot analysis of various cells using Antibody diluted at 1:1000. Secondary antibody(catalog#:RS0002) was diluted at 1:20000



Immunohistochemical analysis of paraffin-embedded human-breast-cancer, antibody was diluted at 1:200



Immunohistochemical analysis of paraffin-embedded human-breast-cancer, antibody was diluted at 1:200



Immunohistochemical analysis of paraffin-embedded human-testis, antibody was diluted at 1:200

