

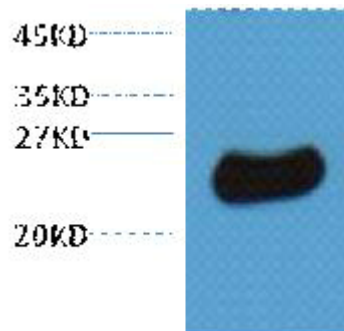


Plant GST Rabbbit Polyclonal Antibody

| | |
|----------------------------------|---|
| Catalog No | YP-Ab-10321 |
| Isotype | IgG |
| Reactivity | Nicotianatabacum |
| Applications | WB |
| Gene Name | |
| Protein Name | |
| Immunogen | Recombinant Protein of Plant GST |
| Specificity | The antibody detects endogenous Plant GST proteins. |
| Formulation | PBS, pH 7.4, containing 0.5%BSA, 0.02% sodium azide as Preservative and 50% Glycerol. |
| Source | Polyclonal, Rabbit,IgG |
| Purification | The antibody was affinity-purified from rabbit antiserum by affinity-chromatography using specific immunogen. |
| Dilution | WB: 1:3000-10000 |
| Concentration | 1 mg/ml |
| Purity | ≥90% |
| Storage Stability | -20°C/1 year |
| Synonyms | YM3219 |
| Observed Band | 24kD |
| Cell Pathway | |
| Tissue Specificity | |
| Function | |
| Background | The soluble glutathione transferases (GSTs) are encoded by a large and diverse gene family in plants. GSTs are predominantly expressed in the cytosol, where their GSH-dependent catalytic functions include the conjugation and resulting detoxification of herbicides, the reduction of organic hydroperoxides formed during oxidative stress and the isomerization of maleylacetoacetate to fumarylacetoacetate, a key step in the catabolism of tyrosine. GSTs also have non-catalytic roles, binding flavonoid natural products in the cytosol prior to their deposition in the vacuole. |
| matters needing attention | Avoid repeated freezing and thawing! |

**Usage suggestions**

This product can be used in immunological reaction related experiments. For more information, please consult technical personnel.

Products Images

10ug total Nicotiana tabacum lysate + primary antibody dilute at 1:3000. Secondary antibody(catalog#:RS0002) was diluted at 1:20000