



Desmin Rabbit pAb

| | |
|---------------------------|---|
| Catalog No | YP-Ab-10314 |
| Isotype | IgG |
| Reactivity | Human; Mouse;Rat |
| Applications | IHC;WB |
| Gene Name | DES |
| Protein Name | Desmin |
| Immunogen | Synthesized peptide derived from human Desmin AA range: 197-247 |
| Specificity | This antibody detects endogenous levels of Desmin at Human, Mouse,Rat |
| Formulation | Liquid in PBS containing 50% glycerol, 0.5% BSA and 0.75% sodium azide. |
| Source | Polyclonal, Rabbit,IgG |
| Purification | The antibody was affinity-purified from rabbit serum by affinity-chromatography using specific immunogen. |
| Dilution | IHC-p1:50-200 ,WB 1:1000-2000 |
| Concentration | 1 mg/ml |
| Purity | ≥90% |
| Storage Stability | -20°C/1 year |
| Synonyms | Desmin |
| Observed Band | 54kD |
| Cell Pathway | Cytoplasmic |
| Tissue Specificity | Muscle,Skeletal muscle, |
| Function | disease:Defects in DES are the cause of cardiomyopathy dilated type 1I (CMD1I) [MIM:604765]. Dilated cardiomyopathy is a disorder characterized by ventricular dilation and impaired systolic function, resulting in congestive heart failure and arrhythmia. Patients are at risk of premature death.,disease:Defects in DES are the cause of desmin-related cardio-skeletal myopathy (CSM) [MIM:601419]; also known as desmin-related myopathy (DRM). CSM is characterized by skeletal muscle weakness associated with cardiac conduction blocks, arrhythmias, restrictive heart failure, and by intracytoplasmic accumulation of desmin-reactive deposits in cardiac and skeletal muscle cells. A desmin-related myopathy can have a distal onset, it is then known as hereditary distal myopathy (HDM).,disease:Defects in DES are the cause of neurogenic scapuloperoneal syndrome Kaeser type (Kaeser syndrome) [MIM:181400]. |
| Background | This gene encodes a muscle-specific class III intermediate filament. Homopolymers of this protein form a stable intracytoplasmic filamentous network connecting myofibrils to each other and to the plasma membrane. Mutations in |



this gene are associated with desmin-related myopathy, a familial cardiac and skeletal myopathy (CSM), and with distal myopathies. [provided by RefSeq, Jul 2008],

matters needing attention

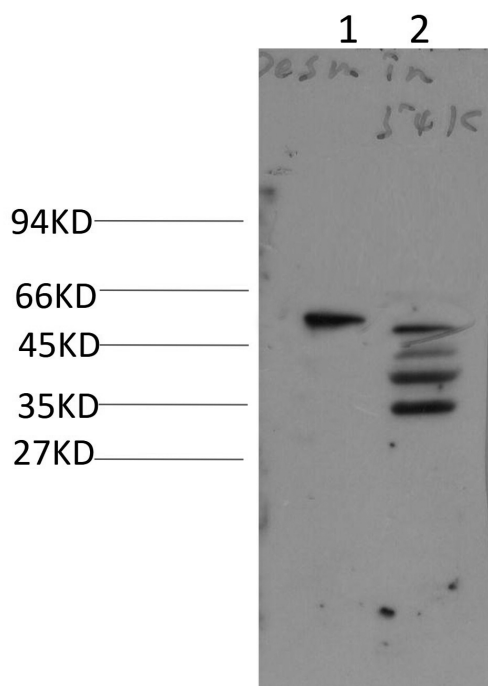
Avoid repeated freezing and thawing!

Usage suggestions

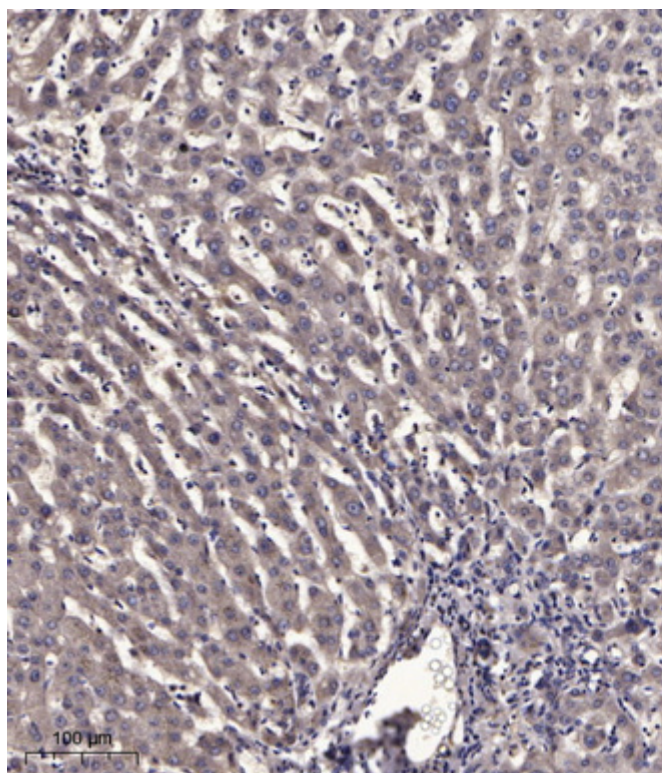
This product can be used in immunological reaction related experiments. For more information, please consult technical personnel.



Products Images



Western blot analysis of 1) Mouse Heart Tissue, 2) Rat Heart Tissue Lysate using Desmin Rabbit Polyclonal Antibody diluted at 1:2,000.



Immunohistochemical analysis of paraffin-embedded human liver cancer. 1, Antibody was diluted at 1:200 (4° overnight). 2, Tris-EDTA, pH 9.0 was used for antigen retrieval. 3, Secondary antibody was diluted at 1:200 (room temperature, 45 min).