

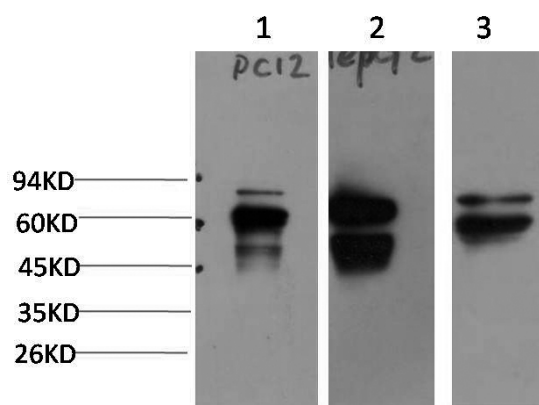


Peripheralin Rabbit pAb

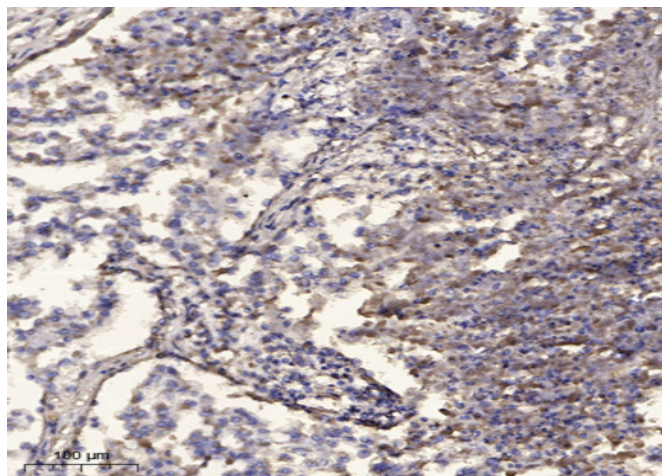
Catalog No	YP-Ab-10308
Isotype	IgG
Reactivity	Human; Mouse;Rat
Applications	IHC;WB
Gene Name	PRPH NEF4 PRPH1
Protein Name	Peripheralin
Immunogen	Synthesized peptide derived from human Peripheralin AA range: 85-135
Specificity	This antibody detects endogenous levels of Peripheralin at Human, Mouse,Rat
Formulation	Liquid in PBS containing 50% glycerol, 0.5% BSA and 0.15% sodium azide.
Source	Polyclonal, Rabbit,IgG
Purification	The antibody was affinity-purified from rabbit serum by affinity-chromatography using specific immunogen.
Dilution	IHC-p1:50-200 ,WB 1:1000-2000
Concentration	1 mg/ml
Purity	≥90%
Storage Stability	-20°C/1 year
Synonyms	Peripheralin (Neurofilament 4)
Observed Band	55kD
Cell Pathway	Cytoplasm, cytoskeleton . Cell projection, axon . Perikaryon .
Tissue Specificity	Expressed in the neurons of the outer hair cells in the organ of Corti and to a lesser extent in type I spiral ganglion cells.
Function	
Background	Peripheralin(PRPH) Homo sapiens This gene encodes a cytoskeletal protein found in neurons of the peripheral nervous system. The encoded protein is a type III intermediate filament protein with homology to other cytoskeletal proteins such as desmin, and is a different protein that the peripherin found in photoreceptors. Mutations in this gene have been associated with susceptibility to amyotrophic lateral sclerosis.
matters needing attention	Avoid repeated freezing and thawing!
Usage suggestions	This product can be used in immunological reaction related experiments. For more information, please consult technical personnel.



Products Images



Western blot analysis of 1)PC12 Cell, 2) HepG2 Cell, 3) Mouse Liver Tissue Lysate using Rabbit pAb diluted at 1:2,000.



Immunohistochemical analysis of paraffin-embedded human Squamous cell carcinoma of lung. 1, Antibody was diluted at 1:200(4° overnight). 2, Tris-EDTA,pH9.0 was used for antigen retrieval. 3,Secondary antibody was diluted at 1:200(room temperature, 45min).