

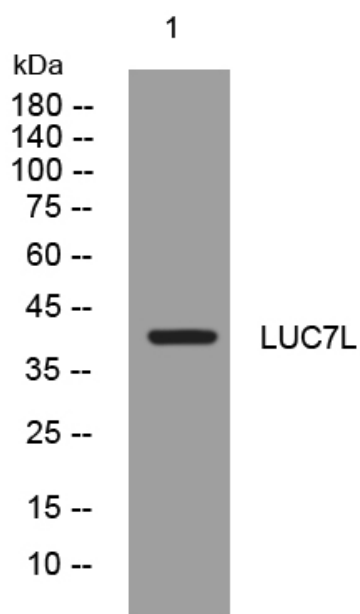


# LUC7L rabbit pAb

<b>Catalog No</b>	YP-Ab-09158
<b>Isotype</b>	IgG
<b>Reactivity</b>	Human; Mouse
<b>Applications</b>	WB
<b>Gene Name</b>	LUC7L LUC7L1
<b>Protein Name</b>	LUC7L
<b>Immunogen</b>	Synthesized peptide derived from human LUC7L AA range: 43-93
<b>Specificity</b>	This antibody detects endogenous levels of LUC7L at Human/Mouse
<b>Formulation</b>	Liquid in PBS containing 50% glycerol, 0.5% BSA and 0.02% sodium azide.
<b>Source</b>	Polyclonal, Rabbit,IgG
<b>Purification</b>	The antibody was affinity-purified from rabbit serum by affinity-chromatography using specific immunogen.
<b>Dilution</b>	WB 1: 500-2000
<b>Concentration</b>	1 mg/ml
<b>Purity</b>	≥90%
<b>Storage Stability</b>	-20°C/1 year
<b>Synonyms</b>	
<b>Observed Band</b>	
<b>Cell Pathway</b>	U1 snRNP,U2-type prespliceosome,
<b>Tissue Specificity</b>	Ubiquitous.
<b>Function</b>	function:May bind to RNA via its Arg/Ser-rich domain.,similarity:Belongs to the Luc7 family.,similarity:Contains 1 C2H2-type zinc finger.,tissue specificity:Ubiquitous.,
<b>Background</b>	The LUC7L gene may represent a mammalian heterochromatic gene, encoding a putative RNA-binding protein similar to the yeast Luc7p subunit of the U1 snRNP splicing complex that is normally required for 5-prime splice site selection (Tufarelli et al., 2001 [PubMed 11170747]).[supplied by OMIM, Mar 2008],
<b>matters needing attention</b>	Avoid repeated freezing and thawing!
<b>Usage suggestions</b>	This product can be used in immunological reaction related experiments. For more information, please consult technical personnel.



## Products Images



Western blot analysis of lysates from CACO2 cells,  
primary antibody was diluted at 1:1000, 4°over night