

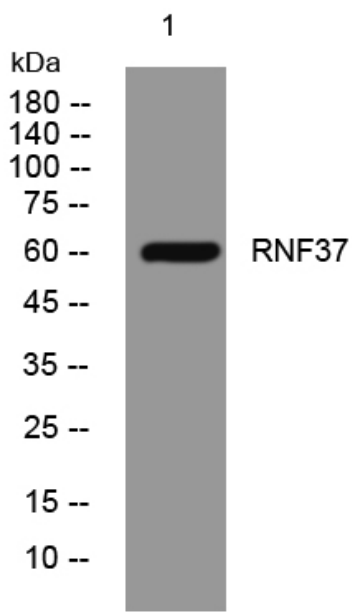


RNF37 rabbit pAb

Catalog No	YP-Ab-09155
Isotype	IgG
Reactivity	Human; Mouse
Applications	WB
Gene Name	UBOX5 KIAA0860 RNF37 UBCE7IP5
Protein Name	RNF37
Immunogen	Synthesized peptide derived from human RNF37 AA range: 127-177
Specificity	This antibody detects endogenous levels of RNF37 at Human/Mouse
Formulation	Liquid in PBS containing 50% glycerol, 0.5% BSA and 0.02% sodium azide.
Source	Polyclonal, Rabbit,IgG
Purification	The antibody was affinity-purified from rabbit serum by affinity-chromatography using specific immunogen.
Dilution	WB 1: 500-2000
Concentration	1 mg/ml
Purity	≥90%
Storage Stability	-20°C/1 year
Synonyms	
Observed Band	
Cell Pathway	Nucleus . Enriched in nuclear bodies. .
Tissue Specificity	Expressed in liver, heart, brain, kidney and testis.
Function	similarity:Contains 1 RING-type zinc finger.,similarity:Contains 1 U-box domain.,subunit:Interacts with UBE2L3.,
Background	This gene encodes a U-box domain containing protein. The encoded protein interacts with E2 enzymes and may play a role in the ubiquitination pathway. Alternate splicing results in multiple transcript variants. [provided by RefSeq, Jun 2012],
matters needing attention	Avoid repeated freezing and thawing!
Usage suggestions	This product can be used in immunological reaction related experiments. For more information, please consult technical personnel.



Products Images



Western blot analysis of lysates from MCF-7 cells,
primary antibody was diluted at 1:1000, 4° over night