



DZIP1 rabbit pAb

| | |
|---------------------------|--|
| Catalog No | YP-Ab-09149 |
| Isotype | IgG |
| Reactivity | Human; Mouse |
| Applications | WB |
| Gene Name | DZIP1 DZIP DZIP2 KIAA0996 |
| Protein Name | DZIP1 |
| Immunogen | Synthesized peptide derived from human DZIP1 AA range: 73-123 |
| Specificity | This antibody detects endogenous levels of DZIP1 at Human/Mouse |
| Formulation | Liquid in PBS containing 50% glycerol, 0.5% BSA and 0.02% sodium azide. |
| Source | Polyclonal, Rabbit,IgG |
| Purification | The antibody was affinity-purified from rabbit serum by affinity-chromatography using specific immunogen. |
| Dilution | WB 1: 500-2000 |
| Concentration | 1 mg/ml |
| Purity | ≥90% |
| Storage Stability | -20°C/1 year |
| Synonyms | |
| Observed Band | |
| Cell Pathway | Cytoplasm, cytoskeleton, cilium basal body . Cytoplasm, cytoskeleton, microtubule organizing center, centrosome, centriolar satellite . Cytoplasm, cytoskeleton, microtubule organizing center, centrosome, centriole . Nucleus . Nucleus speckle . Cytoplasm . Localizes to the centriole in cells lacking cilia and to the cilium basal body in ciliated cells (PubMed:19852954). At the exit of mitosis, when the primary cilium is reassembled in daughter cells, localizes at the mother centriole that acts as the basal body of the assembling primary cilium and also accumulates at the ciliary base that constitutes a diffusion barrier for ciliary proteins (By similarity). . |
| Tissue Specificity | Predominantly expressed in testis (at protein level) (PubMed:15081113, PubMed:32051257). Also expressed in fetal brain, adult oocytes and ovary (PubMed:15081113). Expressed in undifferentiated ES cells (PubMed:15081113). In testis, it is specifically expressed in germ cells (at protein level) (PubMed:15081113, PubMed:32051257). Expressed in mature germ cells and secondary spermatocytes, while it is weakly or not expressed in primary spermatocytes (PubMed:15081113). |
| Function | function:May participate in spermatogenesis via its interaction with DAZ.,sequence caution:Contaminating sequence. Potential poly-A sequence.,similarity:Belongs to the DZIP C2H2-type zinc-finger protein |



family.,similarity:Contains 1 C2H2-type zinc finger.,subcellular location:In testis, it is predominantly nuclear, with some cytoplasmic localization in spermatogonia. Colocalizes with DAZ and DAZL in primordial germ cells.,subunit:Isoform 1 and isoform 2 interact with DAZ proteins. May participate in a RNA-binding complex that functions in both ES cells and germ cells.,tissue specificity:Predominantly expressed in testis. Also expressed in fetal brain, adult oocytes and ovary. Expressed in undifferentiated ES cells. In testis, it is probably specifically expressed in germ cells. Expressed in mature germ cells and secondary spermatocytes, while it is weakly or not expressed in primary sper

Background

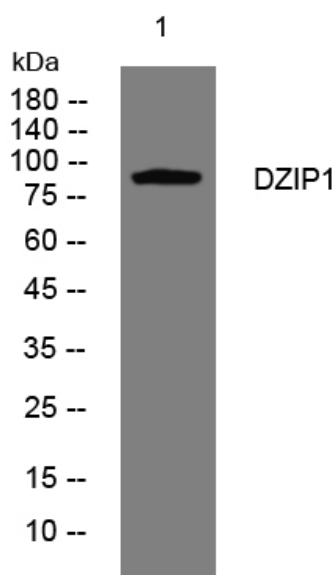
matters needing attention

Avoid repeated freezing and thawing!

Usage suggestions

This product can be used in immunological reaction related experiments. For more information, please consult technical personnel.

Products Images



Western blot analysis of lysates from 293T cells, primary antibody was diluted at 1:1000, 4° over night