



CDY2 rabbit pAb

Catalog No	YP-Ab-09127
Isotype	IgG
Reactivity	Human;Rat;Mouse;
Applications	WB
Gene Name	CDY2A CDY2; CDY2B
Protein Name	CDY2
Immunogen	Synthesized peptide derived from human CDY2 AA range: 434-484
Specificity	This antibody detects endogenous levels of CDY2 at Human
Formulation	Liquid in PBS containing 50% glycerol, 0.5% BSA and 0.02% sodium azide.
Source	Polyclonal, Rabbit,IgG
Purification	The antibody was affinity-purified from rabbit serum by affinity-chromatography using specific immunogen.
Dilution	WB 1: 500-2000
Concentration	1 mg/ml
Purity	≥90%
Storage Stability	-20°C/1 year
Synonyms	
Observed Band	
Cell Pathway	Nucleus .
Tissue Specificity	Testis specific.
Function	catalytic activity:Acetyl-CoA + histone = CoA + acetylhistone.,function:May have histone acetyltransferase activity.,similarity:Contains 1 chromo domain.,tissue specificity:Testis specific.,
Background	This intronless gene encodes a protein containing a chromodomain and a histone acetyltransferase catalytic domain. Chromodomain proteins are components of heterochromatin-like complexes and can act as gene repressors. This protein is localized to the nucleus of late spermatids where histone hyperacetylation takes place. Histone hyperacetylation is thought to facilitate the transition in which protamines replace histones as the major DNA-packaging protein. Two nearly identical copies of this gene are found in a palindromic region on chromosome Y; this record represents the telomeric copy. Chromosome Y also contains a pair of closely related genes in another more telomeric palindrome as well as several related pseudogenes. [provided by RefSeq, Jul 2008],

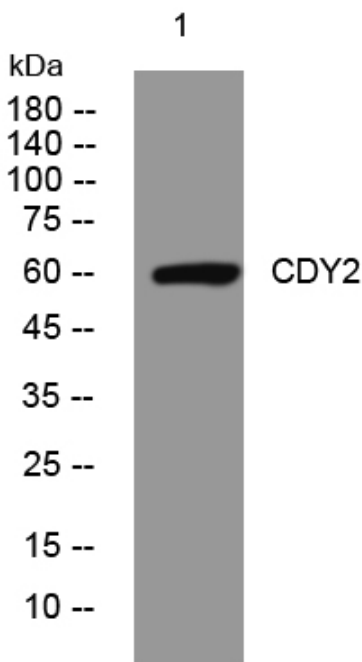
matters needing attention

Avoid repeated freezing and thawing!

Usage suggestions

This product can be used in immunological reaction related experiments. For more information, please consult technical personnel.

Products Images



Western blot analysis of lysates from HpeG2 cells, primary antibody was diluted at 1:1000, 4° over night