

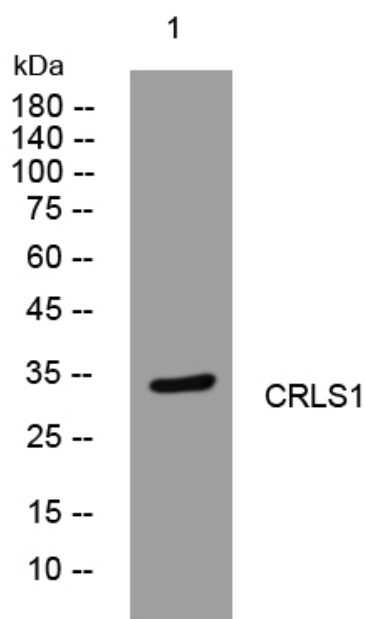


# CRLS1 rabbit pAb

<b>Catalog No</b>	YP-Ab-09118
<b>Isotype</b>	IgG
<b>Reactivity</b>	Human; Mouse; Rat
<b>Applications</b>	WB
<b>Gene Name</b>	CRLS1 C20orf155 CLS1
<b>Protein Name</b>	CRLS1
<b>Immunogen</b>	Synthesized peptide derived from human CRLS1 AA range: 61-111
<b>Specificity</b>	This antibody detects endogenous levels of CRLS1 at Human/Mouse/Rat
<b>Formulation</b>	Liquid in PBS containing 50% glycerol, 0.5% BSA and 0.02% sodium azide.
<b>Source</b>	Polyclonal, Rabbit, IgG
<b>Purification</b>	The antibody was affinity-purified from rabbit serum by affinity-chromatography using specific immunogen.
<b>Dilution</b>	WB 1: 500-2000
<b>Concentration</b>	1 mg/ml
<b>Purity</b>	≥90%
<b>Storage Stability</b>	-20°C/1 year
<b>Synonyms</b>	
<b>Observed Band</b>	
<b>Cell Pathway</b>	Mitochondrion inner membrane ; Multi-pass membrane protein .
<b>Tissue Specificity</b>	Highly expressed in tissues such as heart, skeletal muscle and liver.
<b>Function</b>	catalytic activity: 2 Phosphatidylglycerol = diphosphatidylglycerol + glycerol., function: Catalyzes the reversible phosphatidyl group transfer from one phosphatidylglycerol molecule to another to form cardiolipin (CL) (diphosphatidylglycerol) and glycerol., similarity: Belongs to the CDP-alcohol phosphatidyltransferase class-I family., tissue specificity: Highly expressed in tissues such as heart, skeletal muscle and liver.,
<b>Background</b>	This gene encodes a member of the CDP-alcohol phosphatidyltransferase class-I family of proteins. The encoded enzyme catalyzes the synthesis of cardiolipin, a phospholipid component of mitochondrial membranes that is critical for mitochondrial function. [provided by RefSeq, Apr 2016],
<b>matters needing attention</b>	Avoid repeated freezing and thawing!

**Usage suggestions**

This product can be used in immunological reaction related experiments. For more information, please consult technical personnel.

**Products Images**

Western blot analysis of lysates from SH-SY5Y cells, primary antibody was diluted at 1:1000, 4° over night