

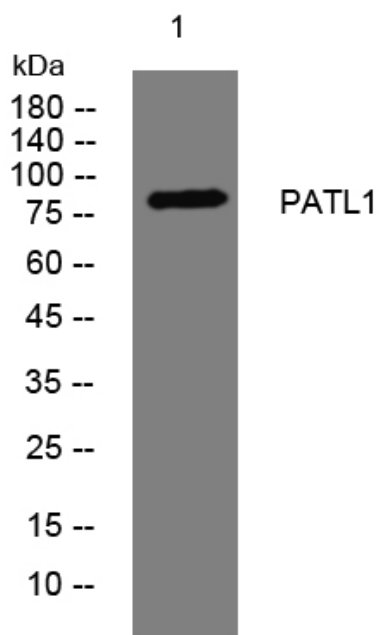


PATL1 rabbit pAb

Catalog No	YP-Ab-08220
Isotype	IgG
Reactivity	Human; Mouse; Rat
Applications	WB
Gene Name	PATL1 OK/KNS-cl.5
Protein Name	PATL1
Immunogen	Synthesized peptide derived from human PATL1 AA range: 263-313
Specificity	This antibody detects endogenous levels of PATL1 at Human/Mouse/Rat
Formulation	Liquid in PBS containing 50% glycerol, 0.5% BSA and 0.335% sodium azide.
Source	Polyclonal, Rabbit, IgG
Purification	The antibody was affinity-purified from rabbit serum by affinity-chromatography using specific immunogen.
Dilution	WB 1:500-2000
Concentration	1 mg/ml
Purity	≥90%
Storage Stability	-20°C/1 year
Synonyms	Protein PAT1 homolog 1 (PAT1-like protein 1) (Protein PAT1 homolog b) (Pat1b) (hPat1b)
Observed Band	85kD
Cell Pathway	Cytoplasm, P-body . Nucleus . Nucleus, PML body . Nucleus speckle . Predominantly cytoplasmic (PubMed:22090346). Shuttles between the nucleus and the cytoplasm in a CRM1-dependent manner (PubMed:22090346). Enriched in splicing speckles. Localization to nuclear foci and speckles requires active transcription. Excluded from the nucleolus (PubMed:22090346). .
Tissue Specificity	Ubiquitous.
Function	function: Required for P body formation., similarity: Belongs to the PAT1 family., tissue specificity: Ubiquitous.,
Background	
matters needing attention	Avoid repeated freezing and thawing!
Usage suggestions	This product can be used in immunological reaction related experiments. For more information, please consult technical personnel.



Products Images



Western blot analysis of lysates from HCT116 cells,
primary antibody was diluted at 1:1000, 4°over night