

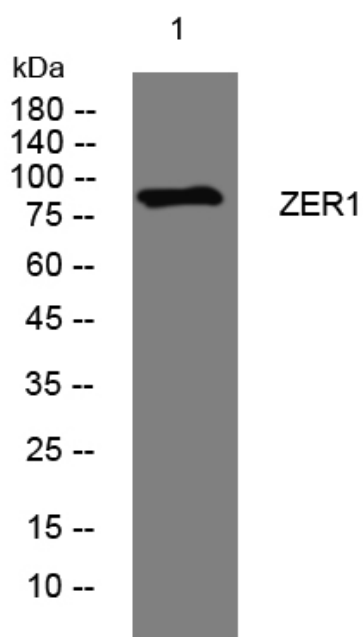


ZER1 rabbit pAb

Catalog No	YP-Ab-08203
Isotype	IgG
Reactivity	Human; Mouse
Applications	WB
Gene Name	ZER1 C9orf60 ZYG ZYG11BL
Protein Name	ZER1
Immunogen	Synthesized peptide derived from human ZER1 AA range: 388-438
Specificity	This antibody detects endogenous levels of ZER1 at Human/Mouse
Formulation	Liquid in PBS containing 50% glycerol, 0.5% BSA and 0.318% sodium azide.
Source	Polyclonal, Rabbit,IgG
Purification	The antibody was affinity-purified from rabbit serum by affinity-chromatography using specific immunogen.
Dilution	WB 1:500-2000
Concentration	1 mg/ml
Purity	≥90%
Storage Stability	-20°C/1 year
Synonyms	Protein zer-1 homolog (Hzyg) (Zyg-11 homolog B-like protein)
Observed Band	85kD
Cell Pathway	Cul2-RING ubiquitin ligase complex,
Tissue Specificity	Expressed in testis, spermatocytes and spermatids (at protein level). Expressed in spermatocytes, spermatids, prostate, skeletal muscle, ovary, small intestine, heart, brain and pancreas.
Function	function:Probably acts as target recruitment subunit in the E3 ubiquitin ligase complex ZER1-CUL2-Elongin BC.,similarity:Belongs to the zyg-11 family.,similarity:Contains 3 LRR (leucine-rich) repeats.,similarity:Contains 5 ARM repeats.,subunit:Interacts with the TCEB1-TCEB2/Elongin BC complex. Part of an E3 ubiquitin ligase complex including ZER1, CUL2 and Elongin BC.,tissue specificity:Expressed in testis, spermatocytes and spermatides (at protein level). Expressed in spermatocytes, spermatides, prostate, skeletal muscle, ovary, small intestine, heart, brain and pancreas.,
Background	This gene encodes a subunit of an E3 ubiquitin ligase complex that may be involved in meiosis. The encoded protein contains three leucine-rich repeat motifs. [provided by RefSeq, Nov 2012],
matters needing attention	Avoid repeated freezing and thawing!

Usage suggestions

This product can be used in immunological reaction related experiments. For more information, please consult technical personnel.

Products Images

Western blot analysis of lysates from SH-SY5Y cells, primary antibody was diluted at 1:1000, 4° over night