



ZNT5 rabbit pAb

Catalog No	YP-Ab-08196
Isotype	IgG
Reactivity	Human; Mouse
Applications	WB
Gene Name	SLC30A5 ZNT5 ZNTL1 ZTL1 UNQ863/PRO1879
Protein Name	ZNT5
Immunogen	Synthesized peptide derived from human ZNT5 AA range: 106-156
Specificity	This antibody detects endogenous levels of ZNT5 at Human/Mouse
Formulation	Liquid in PBS containing 50% glycerol, 0.5% BSA and 0.311% sodium azide.
Source	Polyclonal, Rabbit,IgG
Purification	The antibody was affinity-purified from rabbit serum by affinity-chromatography using specific immunogen.
Dilution	WB 1:500-2000
Concentration	1 mg/ml
Purity	≥90%
Storage Stability	-20°C/1 year
Synonyms	Zinc transporter 5 (ZnT-5) (Solute carrier family 30 member 5) (ZnT-like transporter 1) (hZTL1)
Observed Band	85kD
Cell Pathway	Golgi apparatus, trans-Golgi network membrane ; Multi-pass membrane protein . Perimeter of granules, localizes to the brush border membrane of the enterocyte. Concentrated in early compartments of the secretory pathway such as COPII-coated vesicles.
Tissue Specificity	Ubiquitously expressed. Highly expressed in pancreas, liver and kidney. Expressed abundantly in insulin-containing beta cells, undetectable in other endocrine cell types including glucagon-secreting alpha cells and most acinar cells.
Function	function:Functions as a zinc transporter. May be a transporter of zinc into beta cells in order to form insulin crystals. Partly regulates cellular zinc homeostasis. Required with ZNT7 for the activation of zinc-requiring enzymes, alkaline phosphatases (ALPs). Transports zinc into the lumens of the Golgi apparatus and vesicular compartments where ALPs locate, thus, converting apoALPs to holoALPs. Required with ZNT6 and ZNT7 for the activation of TNAP.,induction:Increased intracellular zinc level, resulting from extracellular zinc supplementation, do not induce any up- or down-regulation of gene expression. Up-regulated by zinc depletion.,miscellaneous:The histidine-rich loop is essential for ZNT5 and ZNT6 heterooligomeric complexes to activate TNAP.,similarity:Belongs to the cation diffusion facilitator (CDF) transporter (TC



2.A.4) family. SLC30A subfamily.,subcellular location:Perimeter

Background

This gene encodes a member of the SLC30A/ZnT family of zinc transporter proteins. ZnT proteins mediate both cellular zinc efflux and zinc sequestration into membrane-bound organelles. The encoded protein plays a role in the early secretory pathway as a heterodimer with zinc transporter 6, and may also regulate zinc sequestration into secretory granules of pancreatic beta cells. Alternatively spliced transcript variants encoding multiple isoforms have been observed for this gene, and a pseudogene of this gene is located on the long arm of chromosome 19. [provided by RefSeq, Oct 2011],

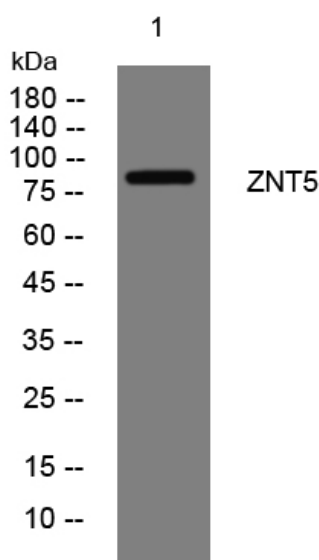
matters needing attention

Avoid repeated freezing and thawing!

Usage suggestions

This product can be used in immunological reaction related experiments. For more information, please consult technical personnel.

Products Images



Western blot analysis of lysates from HpeG2 cells, primary antibody was diluted at 1:1000, 4° over night