

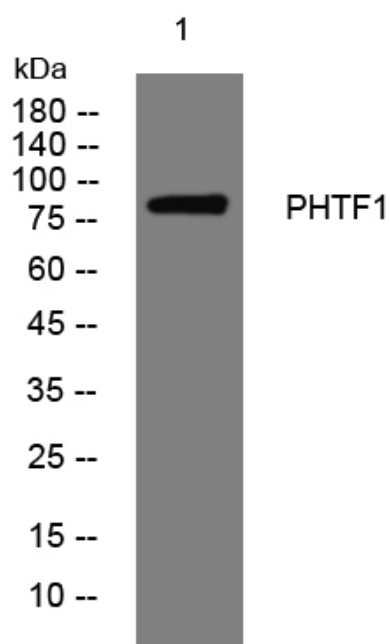


# PHTF1 rabbit pAb

<b>Catalog No</b>	YP-Ab-08183
<b>Isotype</b>	IgG
<b>Reactivity</b>	Human; Mouse
<b>Applications</b>	WB
<b>Gene Name</b>	PHTF1 PHTF
<b>Protein Name</b>	PHTF1
<b>Immunogen</b>	Synthesized peptide derived from human PHTF1 AA range: 122-172
<b>Specificity</b>	This antibody detects endogenous levels of PHTF1 at Human/Mouse
<b>Formulation</b>	Liquid in PBS containing 50% glycerol, 0.5% BSA and 0.298% sodium azide.
<b>Source</b>	Polyclonal, Rabbit,IgG
<b>Purification</b>	The antibody was affinity-purified from rabbit serum by affinity-chromatography using specific immunogen.
<b>Dilution</b>	WB 1:500-2000
<b>Concentration</b>	1 mg/ml
<b>Purity</b>	≥90%
<b>Storage Stability</b>	-20°C/1 year
<b>Synonyms</b>	Putative homeodomain transcription factor 1
<b>Observed Band</b>	85kD
<b>Cell Pathway</b>	Endoplasmic reticulum membrane ; Multi-pass membrane protein . Golgi apparatus, cis-Golgi network membrane ; Multi-pass membrane protein .
<b>Tissue Specificity</b>	Widely expressed with highest levels in testis.
<b>Function</b>	function:May play a role in transcription regulation.,similarity:Contains 1 basic helix-loop-helix (bHLH) domain.,subunit:Interacts with FEM1B.,tissue specificity:Widely expressed with highest levels in testis.,
<b>Background</b>	
<b>matters needing attention</b>	Avoid repeated freezing and thawing!
<b>Usage suggestions</b>	This product can be used in immunological reaction related experiments. For more information, please consult technical personnel.



## Products Images



Western blot analysis of lysates from MCF-7 cells,  
primary antibody was diluted at 1:1000, 4° over night