

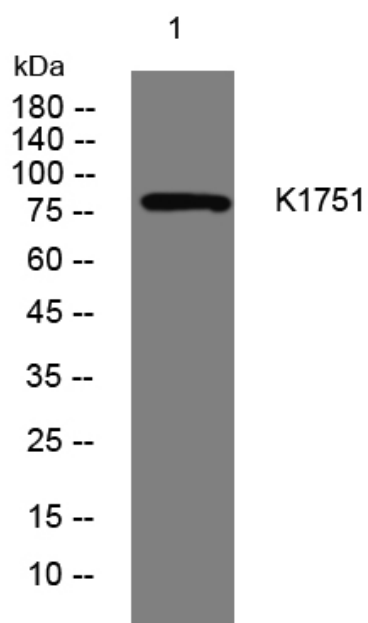


# K1751 rabbit pAb

<b>Catalog No</b>	YP-Ab-08182
<b>Isotype</b>	IgG
<b>Reactivity</b>	Human; Mouse
<b>Applications</b>	WB
<b>Gene Name</b>	KIAA1751
<b>Protein Name</b>	K1751
<b>Immunogen</b>	Synthesized peptide derived from human K1751 AA range: 315-365
<b>Specificity</b>	This antibody detects endogenous levels of K1751 at Human/Mouse
<b>Formulation</b>	Liquid in PBS containing 50% glycerol, 0.5% BSA and 0.297% sodium azide.
<b>Source</b>	Polyclonal, Rabbit,IgG
<b>Purification</b>	The antibody was affinity-purified from rabbit serum by affinity-chromatography using specific immunogen.
<b>Dilution</b>	WB 1:500-2000
<b>Concentration</b>	1 mg/ml
<b>Purity</b>	≥90%
<b>Storage Stability</b>	-20°C/1 year
<b>Synonyms</b>	Uncharacterized protein KIAA1751
<b>Observed Band</b>	85kD
<b>Cell Pathway</b>	Cytoplasm, cytoskeleton, cilium axoneme .
<b>Tissue Specificity</b>	Brain,
<b>Function</b>	polymorphism:PubMed:11214970 sequence (BAB21842) differs from that shown due to a possible polymorphism in position 763 that produces a Gln residue instead of a stop codon (dbSNP:rs28548017) and leads to a protein of 768 residues whose C-terminal sequence is Ser-Gln-Ala-Phe-Asp-Val-Lys instead of Ser.,
<b>Background</b>	
<b>matters needing attention</b>	Avoid repeated freezing and thawing!
<b>Usage suggestions</b>	This product can be used in immunological reaction related experiments. For more information, please consult technical personnel.



## Products Images



Western blot analysis of lysates from THP-1 cells,  
primary antibody was diluted at 1:1000, 4°over night