

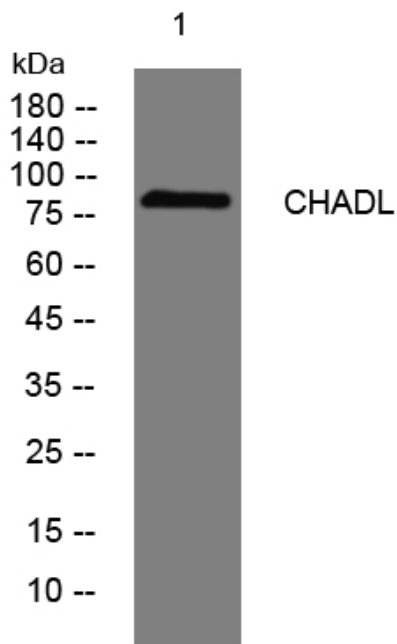


CHADL rabbit pAb

| | |
|----------------------------------|--|
| Catalog No | YP-Ab-08181 |
| Isotype | IgG |
| Reactivity | Human;Rat;Mouse; |
| Applications | WB |
| Gene Name | CHADL SLRR4B |
| Protein Name | CHADL |
| Immunogen | Synthesized peptide derived from human CHADL AA range: 493-543 |
| Specificity | This antibody detects endogenous levels of CHADL at Human |
| Formulation | Liquid in PBS containing 50% glycerol, 0.5% BSA and 0.296% sodium azide. |
| Source | Polyclonal, Rabbit,IgG |
| Purification | The antibody was affinity-purified from rabbit serum by affinity-chromatography using specific immunogen. |
| Dilution | WB 1:500-2000 |
| Concentration | 1 mg/ml |
| Purity | ≥90% |
| Storage Stability | -20°C/1 year |
| Synonyms | Chondroadherin-like protein |
| Observed Band | 85kD |
| Cell Pathway | Secreted . Secreted, extracellular space, extracellular matrix . |
| Tissue Specificity | Brain, |
| Function | similarity:Belongs to the small leucine-rich proteoglycan (SLRP) family. Class IV subfamily.,similarity:Contains 1 LRRNT domain.,similarity:Contains 21 LRR (leucine-rich) repeats., |
| Background | |
| matters needing attention | Avoid repeated freezing and thawing! |
| Usage suggestions | This product can be used in immunological reaction related experiments. For more information, please consult technical personnel. |



Products Images



Western blot analysis of lysates from 3T3 cells, primary antibody was diluted at 1:1000, 4° over night