

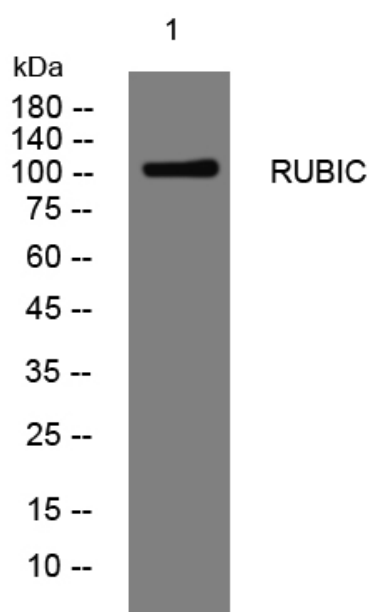


RUBIC rabbit pAb

Catalog No	YP-Ab-08175
Isotype	IgG
Reactivity	Human; Mouse
Applications	WB
Gene Name	KIAA0226
Protein Name	RUBIC
Immunogen	Synthesized peptide derived from human RUBIC AA range: 868-918
Specificity	This antibody detects endogenous levels of RUBIC at Human/Mouse
Formulation	Liquid in PBS containing 50% glycerol, 0.5% BSA and 0.290% sodium azide.
Source	Polyclonal, Rabbit,IgG
Purification	The antibody was affinity-purified from rabbit serum by affinity-chromatography using specific immunogen.
Dilution	WB 1:500-2000
Concentration	1 mg/ml
Purity	≥90%
Storage Stability	-20°C/1 year
Synonyms	Run domain Beclin-1 interacting and cystein-rich containing protein (Rubicon) (Beclin-1 associated RUN domain containing protein) (Baron)
Observed Band	105kD
Cell Pathway	Late endosome . Lysosome . Early endosome . Predominantly located in late endosomes/lysosomes, only partially detected in early endosome and not at all in the Golgi apparatus.
Tissue Specificity	Blood,Bone marrow,Heart,Kidney,
Function	similarity:Contains 1 RUN domain.,
Background	The protein encoded by this gene is a negative regulator of autophagy and endocytic trafficking and controls endosome maturation. This protein contains two conserved domains, an N-terminal RUN domain and a C-terminal DUF4206 domain. The RUN domain is involved in Ras-like GTPase signaling, and the DUF4206 domain contains a diacylglycerol (DAG) binding-like motif. Mutation in this gene results in deletion of the DAG binding-like motif and causes a recessive ataxia. Alternatively spliced transcript variants encoding distinct isoforms have been found for this gene. [provided by RefSeq, Apr 2014],
matters needing attention	Avoid repeated freezing and thawing!

Usage suggestions

This product can be used in immunological reaction related experiments. For more information, please consult technical personnel.

Products Images

Western blot analysis of lysates from SW480 cells, primary antibody was diluted at 1:1000, 4° over night