

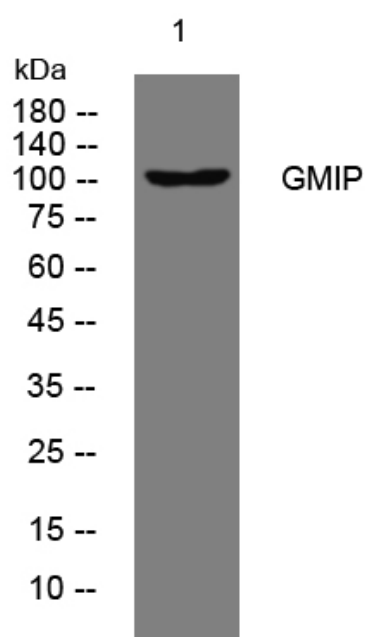


# GMIP rabbit pAb

<b>Catalog No</b>	YP-Ab-08167
<b>Isotype</b>	IgG
<b>Reactivity</b>	Human; Mouse
<b>Applications</b>	WB
<b>Gene Name</b>	GMIP
<b>Protein Name</b>	GMIP
<b>Immunogen</b>	Synthesized peptide derived from human GMIP AA range: 421-471
<b>Specificity</b>	This antibody detects endogenous levels of GMIP at Human/Mouse
<b>Formulation</b>	Liquid in PBS containing 50% glycerol, 0.5% BSA and 0.282% sodium azide.
<b>Source</b>	Polyclonal, Rabbit,IgG
<b>Purification</b>	The antibody was affinity-purified from rabbit serum by affinity-chromatography using specific immunogen.
<b>Dilution</b>	WB 1:500-2000
<b>Concentration</b>	1 mg/ml
<b>Purity</b>	≥90%
<b>Storage Stability</b>	-20°C/1 year
<b>Synonyms</b>	GEM-interacting protein (GMIP)
<b>Observed Band</b>	105kD
<b>Cell Pathway</b>	intracellular,cytosol,
<b>Tissue Specificity</b>	Brain,Leukemia,Platelet,
<b>Function</b>	function:Stimulates, in vitro and in vivo, the GTPase activity of RhoA.,similarity:Contains 1 phorbol-ester/DAG-type zinc finger.,similarity:Contains 1 Rho-GAP domain.,subunit:Interacts with GEM through its N-terminal.,
<b>Background</b>	This gene encodes a member of the ARHGAP family of Rho/Rac/Cdc42-like GTPase activating proteins. The encoded protein interacts with the Ras-related protein Gem through its N-terminal domain. Separately, it interacts with RhoA through a RhoGAP domain, and stimulates RhoA-dependent GTPase activity. Alternative splicing results in multiple transcript variants. [provided by RefSeq, Jan 2014],
<b>matters needing attention</b>	Avoid repeated freezing and thawing!

**Usage suggestions**

This product can be used in immunological reaction related experiments. For more information, please consult technical personnel.

**Products Images**

Western blot analysis of lysates from SW480 cells, primary antibody was diluted at 1:1000, 4° over night